



**St Luke's Uniting Church Highton**

174 Barrabool Road, Highton

Ph. 5244 2997

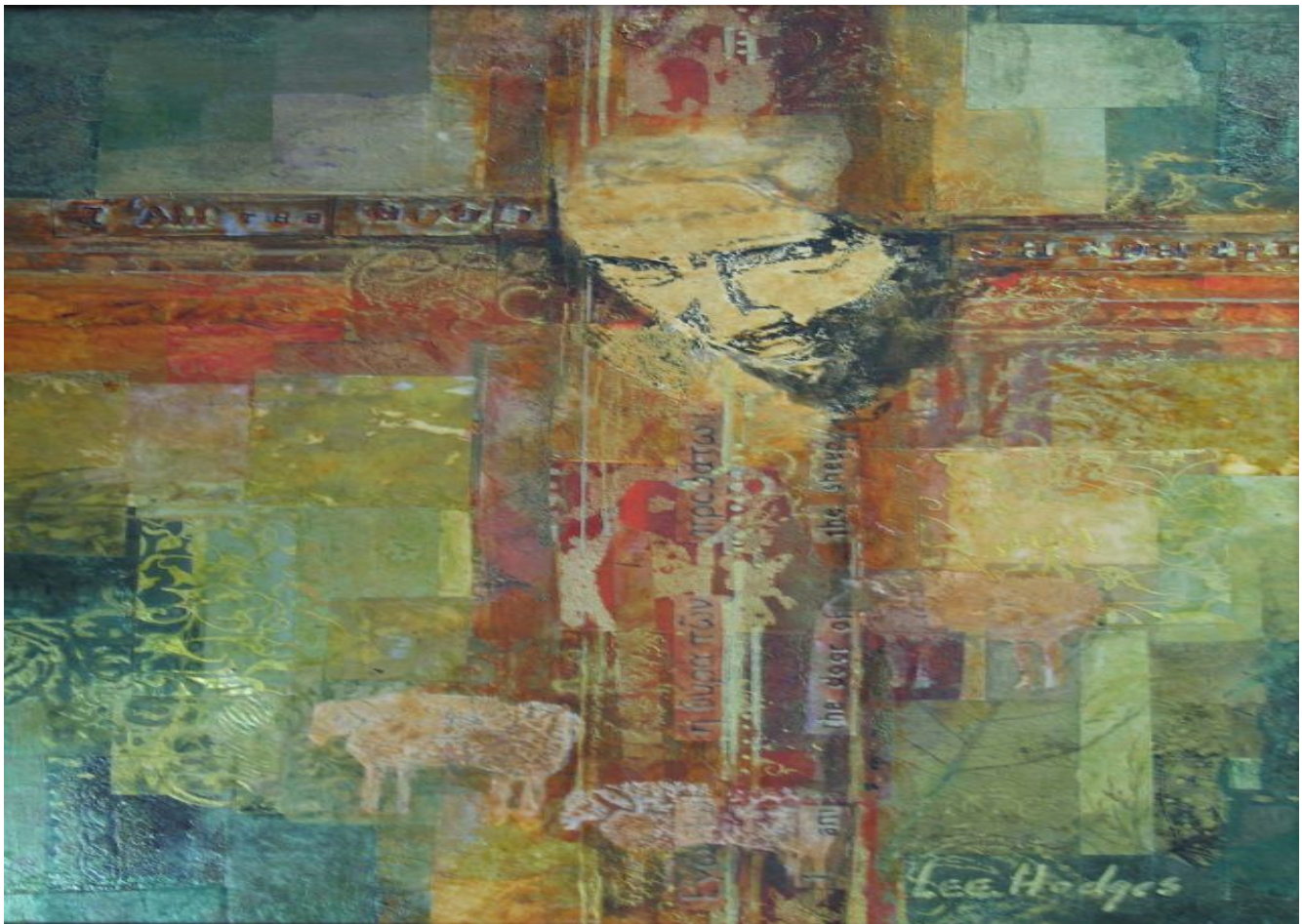
Email: [stlukes\\_highton@inet.net.au](mailto:stlukes_highton@inet.net.au)

Web: [www.hightonstlukes.unitingchurch.org.au](http://www.hightonstlukes.unitingchurch.org.au)

**APRIL 23, 2017**



***This news sheet is available on the website each Saturday evening***



**WELCOME**

*A warm welcome to everyone, especially any visitors who may be sharing with us today. All are invited to stay for fellowship and a cuppa after the service.*



## LECTIONARY READINGS: APRIL 23, 2017

Acts 2: 14a, 22-32; Psalm 16;

1 Peter 1:3-9; John 20:19-31.

---

LAST WEEK'S STATISTICS				
<b>OFFERING:</b>	<b>ACTUAL:</b>	\$1351	<b>Y.T.D.</b>	\$25907
	<b>BUDGET:</b>	\$1711	<b>Y.T.D.</b>	\$27373

---

THIS WEEK'S DIARY:				
Mon	Apr	24	6.30 pm	Presbytery APF
			7.00 pm	Geelong Chorale Geelong Orchestra
			7.30 pm	Environment Action Group
Wed		26	2.30 pm	Coffee & Chat
			6.30 pm	Welsh Ladies Choir
			7.00 pm	JPC
Thurs		27	9.30 am	Men's Shed
			10.30 am	Let's Make Music
			4.00 pm	Choir Practice
			4.30 pm	Junior Choir
			7.30 pm	Theatre of the Damned
Fri		28	9.30 am	Trekkies
			10.30 am	Let's Make Music
Sat		29	9.00 am	Red Cross Training
Sun		30	9.30 am	Worship – Rev. M. Russell

**Church Office Hours:** Wed - 10am to 12noon, Thurs – 10am to 12noon,  
Fri – 10am to 12noon

**SHARING THE JOURNEY:** During April, **Rae Anderson** will conduct this section of worship. She can be contacted on 0413 888 884.

.....

### **HELP REQUIRED TO FILL ROSTERS.**

A number of people who are on the cleaning and morning tea rosters have indicated that they are unable to continue or will be away over the next few months. We require extra people to come onto these rosters to spread the load. If you are interested in helping please see Ian Pooley or Pam Seller for more details.

## **PASTORAL UPDATES.**

Have you changed your address, home phone number, mobile number or email address lately?

Please update your details on a pew card located in the holder on the back of each pew.

Please hand these cards to Pam Seller or Jenny Pooley.

## **PRAYER REQUESTS AND PRAYER CORNER.**

At St. Luke's prayer is considered an important and valued part of our worshipping community.

CARING TOGETHER



The Pastoral Connections ministry team offer several opportunities for you to share in this ministry.

### 1. You can become a member of the **Prayer Link**.

Submitted prayers are forwarded to those willing to commit time to pray for the joys and concerns of the congregation members and their family and friends.

These prayers are shared only after permission has been given by the person requesting the prayer and are always kept confidential.

### 2. You can fill in a **prayer request form**.

These are found in the container on the back of each pew and can be placed in the offering bowl or handed to Jean Williams or Pam Seller following worship. Urgent requests can be emailed to Jean on [bijl.williams@gmail.com](mailto:bijl.williams@gmail.com) at any time during the week.

### 3. **Prayer candles**

These are available at the front of the worship space. Candles represent prayers offered privately for people or situations we care about.

### 4. Visit the **Prayer Corner**.

The Prayer corner is in the North-West corner of the sanctuary. This is a quiet place for reflection and private prayer. If you would like someone to pray with you see the worship leader, Jean Williams or Pam Seller.

**WE ARE CALLED TO UPHOLD EACH OTHER IN PRAYER. PRAYING BOTH INDIVIDUALLY AND TOGETHER.**

**LENTEN EVENT:** UnitingWorld offers a sincere **Thank You** to all who recently participated in Lent Event and journeyed with us to witness where God is alive and at work in the world. We hope the stories of our church partners have encouraged your hope that ‘together we can change the world’. Let us continue to hold them in our prayers.

As we rejoice in the renewal and restoration Easter, we also rejoice in the generosity you have been inspired to show by donating to our work. Donations can still be made directly to UnitingWorld by posting the donation slip in the Lent Event brochure, or call the office 02 8267 4267, or make a secure donation at [www.lentevent.com](http://www.lentevent.com) Thank you for standing with us!

### DUTY ROSTERS

**PLEASE ENSURE THAT YOU FOLLOW THE ROSTER WHICH HAS BEEN DISTRIBUTED TO ALL THOSE LISTED FOR DUTY.**

**APRIL 30, 2017**

<b>CLEANING</b>	N. & N. MCMILLAN	<b>USHERS</b>	T. & D. AYRTON J. LAINE G. STEWART
<b>FLOWERS</b>	P. MILLS	<b>KID'S CHURCH</b>	
<b>MORNING TEA</b>	N. & N. MCMILLAN	<b>CAR DRIVING</b>	M. ROBERTSON
<b>SOUND</b>	N. PATCHETT	<b>POWERPOINT</b>	C. STOEL
<b>CONNECTIONS</b>	P. SELLER	<b>READER</b>	I. PETERSEN
<b>WELCOMER</b>	S. HUNTER	<b>ORGAN</b>	M. JOHN



### LIBRARY NEWS

We have several new books from Uniting Care \_ made available by Des Younghusband.

Some of these are on display in the foyer, and on the library table in the hall.

Many thanks to Des, and to Joan Marshman, Beth Allen, Sue Anderson and Jean Williams for recent donations of books.

Please feel free to browse and/or borrow.

## TOM HEALEY PLAYS THE ORGANS OF GEELONG GRAMMAR

3pm Sunday 30<sup>th</sup> April, Geelong Grammar School, Corio (Chapel & Music School)

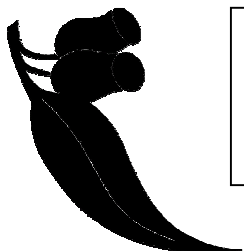
Tom Healey will showcase the 2 manual, 20 stop Fincham organ (ex Masonic Centre, Melbourne) recently installed in the Music School auditorium and the 3 manual, 48 stop Walker organ in the Chapel of All Saints. Works by Elise Barraine, Denis Bedard, Emma Lou Diemer, Franck, Godelieve Ghavalas, Fanny Hensel-Mendelssohn, Gigout, Piazzolla, Clara Schumann, Ethel Smyth, Germaine Tailleferre & Wm Wolsteholme. *Admission Free. Car park access from School Rd. Enq 0352 739 275*



Raising money for our **Share Lenten Appeal** proved to be great fun after a gold coin was popped into the Piggy Bank by people who considered a dollar was a good investment to help people in need, then the possibility of guessing the correct number of buttons in the bottle..... one could win a beautiful basket filled with Easter Eggs.. Easy enough!

Congratulations to young **Natasha Walker** who guessed 295 buttons.  
Well done Natasha.  
Money Raised \$115.00

*Rae  
Anderson  
and Jean  
Williams*



St. Luke's Environment Action Group  
Next meeting 24<sup>th</sup> April 2017  
At 7.30 pm in the Fellowship Room



## **Needed, Workparty Participants Belmont Uniting Church**

Think about coming, **OR** let someone else know about the WorkParty at St Philip's College, Alice Springs.

It's a Uniting Church School which provides quality education for Inland Students and a growing number of Indigenous Students.

The school really appreciates the voluntary work done on it's Campus in the mid-year school holidays.

Food and accommodation is provided at the School.

No special skills needed, just willingness, but skilled people are able to help in particular ways.

Numbers are shrinking so think about enjoying 2 weeks in the Red Centre and having some energetic fun! (June 24 – July 7/8).

### **Contact:**

David and Margery Pettingill on 0409 355 703 or email: [mdpett@brva.co.au](mailto:mdpett@brva.co.au)

### **HOUSE CHURCH: TONIGHT 7.00 PM**

John and Carole Findlay, 11 Kinsmead Street, Waurin Ponds

Speaker: In house discussion — topic to be announced.

Worship: John and Carol

Supper: A – M

Apologies: Susan or Jim 0414 502 969, 52 502 969, or email