

Chapter 28

**CHURCH GROUPS &
ORGANISATIONS**

This chapter endeavours to tell the story of the men and women who responded to the call of the church and have used their skills, provided a service, shared blessings, made sacrifices, accepted challenges, enabled others, joined worship, or just belonged - thereby helping St. Luke's remain steadfast through change.

It is essential in any large organization to have members who are prepared to set aside time for attending meetings, for listening, and for using their skills and knowledge to reach decisions or make recommendations as to the course of action that would achieve the best results. The implementation of the decisions and recommendations often has far reaching influences for the church, both in the near and distant future.

Some groups are formed to accomplish specific goals, and some groups may be on-going and dedicated to the well being of the members. Others perform a pastoral role with their caring actions multiplying throughout the church and community. There are study, prayer, learning, and book reading groups to enhance knowledge, together with the important team of communicators.

The privilege of teaching and caring for children has many rewards.

We look forward each year to the church fairs when we show the community our skills of organization and creativity.

Whether one is working at the Carnival/Expo, serving morning tea, ushering, arranging flowers, praying, preparing or serving the communion

elements, attending meetings, teaching the Sudanese ladies how to sew, mowing the lawns, enjoying craft, cleaning, repairing, driving the bus, making pancakes, teaching the children, assisting the minister, minding the little ones in the crèche, providing music, communicating via the computer, enjoying a pastoral visit, attending House Church or the Mid-week Service, delivering a sermon ... we are all steadfast members of the ministry team of St. Luke's, with Jesus Christ as our guide and strength.

The Rev. Bob Patterson summarized our aims as follows. "In all of life, Grace abounds".

Pastoral Care

The following extract is printed with permission from Dr Jill Tabart and the editor of Proceedings of the Uniting Church Historical Society (Victoria). Dr Tabart presented this paper at the Society's 30th Anniversary in July 2007

"Equipping the people of God is a very different scene from the clergy-centred approach to ministry of even 30 years ago. I doubt we ever expected those ordained to provide all the support for the family journeys of all those under their pastoral care. Some expected it. Some still do. But the times, they are a-changing; and nowadays we expect (as the Basis of Union foreshadowed) that all members of the church will take initiative in growing their faith and exercising their gifts for ministry and mission.

For some individuals, the options for growth in faith are all to bewildering. For others, there's eagerness in choosing from the smorgasbord of opportunities for stretching mind, and faith, and spiritual enrichment.

Sometimes the journeying has been exhilarating. Sometimes it's been tough travelling. Always it's been a voyage of hope, of trust, of expectation.

It seems the need for keeping our spiritual muscles attuned to the tugs and thrusts of the turning tides will always be with us. But we do have a life-raft – the gift of the Spirit in order that we may not lose the way. Faith is fashioned with integrity and we complement the unique giftedness of each other. We draw on shared insights in our discoveries together about God, about faith, about the church's role in this world.

May God give us the grace to find faithful answers fitting for our time.”

Pastoral Care Development

Fifty years ago, we had the church members and the overworked ministers. Prior to that, there were John Wesley's 'Class Leaders', who cared for small groups. The role of the leaders has grown and has changed. At the time of uniting, in 1977, the 'Eldership' principle was adopted, emphasising pastoral care by appointed elders who were supported by Pastoral Care Visitors.

To quote Rev. Colin Thomson, “If you study the disciples' 'form' you will note that they were a fairly ordinary lot. But in responding to Christ's call to serve, they matured amazingly. Nobody has all the gifts that ministering calls for. Human relationships are complex. Pastoral care is a “sensitivity” thing. No one has everything needful for every situation. BUT every one of us has a capacity to care, to be compassionate, to listen, to hear, and to receive”.

The following article is contributed by Joan Jackson, convenor of the Pastoral Care Ministry Team, and describes how pastoral care has worked so effectively at St. Luke's.

“If you look at The Basis of Union brought out at the time of union you will see one of the regulations spelt out for elders was ‘to visit regularly the members, members in association and adherents’.

With an expanding congregation to care for, a system of zones was implemented - three in Highton and one for the Ceres/Barrabool congregations which were part of the Parish at that time. Each zone had a convenor to which the Elders and Pastoral Care Visitors would report back to bi-monthly. In turn the zone convenors would report to the minister. For more serious matters the elder, visitor or zone convenor would communicate directly with the minister.

The role of elders being responsible for pastoral care in conjunction with the minister continued until the change to the 'Purpose Driven Church' in 2003, when it was decided to discontinue the traditional role of the elders. Former elders and pastoral care visitors were encouraged to continue their role in pastoral care, with the zone structure remaining unaltered. This would ensure that each member of the congregation had a particular visitor who was aware of what was happening in a family, building up a friendship and trust in good times, then if bad times came people felt they had a friend they could confide in.

Delivering the Uniting Church monthly *Crosslight* by the elders and visitors gave a great opening to the visit, in some ways taking the place of the Communion Card previously used by the Presbyterians.

The Pastoral Care Ministry Team is made up of the minister, a convenor, two leaders, the three zone convenors and a member of the congregation. The expansion of the pastoral work has come from ideas put forward by the ministry team members. Past customs have been

Steadfast Through Change

revived, such as the welcoming of visitors and the sending of follow-up cards.

People expressing a wish to become members are contacted and the zone convenor arranges a visit.

Community Bus

The use of the community bus has been recommenced to transport elderly members to church.

It is also being used to take the Sudanese children and their families for outings during the school holidays and to transport the Sudanese women to sewing classes.

Wheels

A new initiative is the Wheels program organised by Rae Anderson. People needing transport to appointments can ring Rae and she will arrange for a driver to pick them up from her list of church contacts.. Rae and her car are also at the Highton shopping centre for a few hours one day a week ready to transport people home with their shopping.

Funeral Catering

A longstanding area of pastoral care has been catering for funerals held at the church.

As funerals come at variable intervals, sometimes a heavy load may be imposed on the catering team over a short period. To ease the burden the catering team has been divided into three groups. The community has noticed the good work done by these members, and catering for other functions has increased.

Information and training days have been introduced for church members. Some of the topics covered include: writing of wills; granting power of attorney; and arranging funerals.

All ministry teams co-operate in fund raising and the mutual support is appreciated, creating a firm base for our commitment to pastoral care.”



Above: Beth Allen & Pam Seller



Above Left: Pam Seller, Convenor of the Bellevue Zone



Above Right: Barbara Lamont, Convenor of the North valley Zone



Above: Alf Swan, Convenor of the Thornhill Zone

Experiences of Pastoral Care & Support

A church congregation reflects a cross section of the community, and although

we have faith in God, we still experience life's uncertainties and sorrows. But we believe that we will be helped to survive painful experiences by trusting in God, through the healing power of prayer, and the loving pastoral support of the church.

The following personal stories show how people touched by tragedy have been a source of inspiration by anchoring their lives in a deeply held faith of a merciful God.

The Story of Paul & His Parents

This story has been contributed by Beth and Ken Allen:

“At a critical time in our lives, we experienced God's love and faithfulness in a very special way, and also experienced the loving support of our church family St. Luke's, who embraced us and our family with love, prayers and practical support.

Our story goes like this: On a beautiful spring morning in 1981, our world was turned upside down when we received a phone call to say that our 17 year-old son, Paul, had collapsed whilst playing the piano at a school assembly, and had been taken by ambulance to the Geelong Hospital. Many tests followed, with the most likely diagnosis being a secondary malignant tumour in his brain, necessitating immediate neurosurgery at St. Vincent's in Melbourne. We were devastated, trying to remain calm and positive for Paul and our younger son, Steve, and it was then that we really experienced God's special touch of peace and assurance in the midst of turmoil. We were overwhelmed by the loving practical support offered, the messages of encouragement, and the knowledge that people all over Geelong were praying, especially our own church family. Our own faith grew, as we learned to trust God, regardless of the outcome. Our minister at the time, Rev.

Bob Patterson, called a special prayer meeting in the chapel on the Saturday morning prior to Paul's surgery, and many attended. The congregation were asked to pray at a specific time each day. We were very aware of a mantle of prayer and love which was covering our family and Paul in particular. Paul's surgery was scheduled for the following Monday, and we stayed in Melbourne for the ensuing days, again supported in wonderful ways by our church family. Our trust was in God and the skill of the neurosurgeon, and we praise God that the surgery was completely successful – the surgeon found that the rapidly growing 'thing' in Paul's brain was caused by an arteriovenous malformation (rather like an aneurism), which had self-destructed and self-sealed, causing no neurological deficit.

Today Paul is a qualified pharmacist in Melbourne, happily married with 3 delightful children.

We continue to praise God for restoring our son, for the peace and comfort given us through this difficult period by the empowering of the Holy Spirit, and for the loving support of our church family and friends'.

The Joan & Wes Marshman Story

Another St. Luke's family experienced a truly testing time in their lives.

“The early 1950s saw several subdivisions of land in Highton into residential blocks. This brought many young couples looking for cheap land where they could built their homes and bring up their families.

We were one of those couples, and we settled in Barrabool Road in 1954 following our marriage.

November 1956 saw the birth of our first daughter, Lynne Sherrin whom we brought to the Highton Methodist Church

for baptism. Sadly in April 1960 Lynne was diagnosed with acute leukaemia and admitted to the Geelong Hospital for treatment. We were told it was fatal, particularly in young children, and that there was very little medical treatment available. Thirteen days later Lynne died and our lives were shattered.

Our first resident minister, Rev. Steve Box and his wife Gwenda and young family had settled in the parsonage in Barrabool Road in January of that year and had become close friends of ours. It was they to whom we turned in our depths of despair. They were there for us whenever we needed them, to listen and to comfort us in our grief.

At that time Wes was deeply involved with lay preaching, and at Lynne's funeral every Methodist minister in the Geelong area was present to offer their support."

The Story of Rev. Colin Thomson's Selfless Devotion

Contributed by Jean and Brian Williams

"Colin Thomson was the minister of the Presbyterian Church and later the Uniting Church in Highton from 1974 to 1982. This was a particularly demanding period in the life of the local churches and the ministers.

Colin was always readily supported in his parish work by his wife Audrey, who was a teacher and also the mother of their two boys.

In 1983 Colin accepted a call to the Queenscliff/Point Lonsdale Uniting Church. After several years they returned to live in Highton after retiring from Queenscliff. We had maintained our friendship with Colin and Audrey, and were pleased when they moved to live three doors from us in Highton.



Above L-R: Audrey & Colin Thomson, Jean & Brian Williams and friends, December 1988

Colin was a dedicated minister, and he would ride his bicycle around Highton to visit the sick and carry out his pastoral care work, which was a priority in his ministry. Friends will remember Colin's dry wit and humorous tales.

Unfortunately Audrey took ill and spent some time in hospital in Geelong and Melbourne. Her prognosis was poor, and Colin decided to care for Audrey in their home, with the help of support services. Colin very seldom had to prepare a meal prior to Audrey's illness, and he was suddenly the cook, nurse, cleaner, as well as fitting in all the other domestic tasks. Their sons would visit to spend time with their sick mother.

Church members provided meals and would stay with Audrey if Colin had to attend to business.

It was very sad to see Audrey declining, and to see how tired Colin became. As Audrey's condition worsened she needed more nursing and special care day and night. The District Nurses and Palliative Carers gave them great support.

Though sleep deprived, Colin never complained. He was always very grateful for assistance, and so happy to receive phone calls from his family,

friends in the ministry, and members of the congregation.

Sadly Audrey died at home in June 1994. We had delayed our departure for our round Australia caravan trip to attend Audrey's funeral at St. Luke's on Wednesday 8 June. Next day we said goodbye to Colin and headed off, arriving at Charleville on the Saturday. We decided to ring one of our sons that evening and were devastated to hear that Colin had died that day when taking a stroll along the river bank – just three days after Audrey's funeral. The strain of looking after Audrey had taken its ultimate toll.

Colin chose to devote his life to the care of his wife. He was a living example of faith in a compassionate God, and he trusted in and lived out the teachings of Jesus.

Colin's special message during worship was: 'Now friends, let's think about that and let your thoughts become prayers'."

Sunday School to Kid's Church

The traditional Sunday School classes, anniversaries and celebrations continued in the Lane Memorial Hall and the chapel complex. In 1964, when the preschool facility was built the Sunday School kindergarten classes shared the preschool building each Sunday for many years, as numbers continued to grow.

By 1970, Sunday School numbers had out-grown the accommodation at Barrabool Road, so the Highton Presbyterian Sunday School was made available for an hour a week. With the decision to form the Highton Methodist-Presbyterian Cooperating Parish in 1972, all morning services were held at the Presbyterian property in Roslyn Road. The combined Sunday school numbers

had increased, and required the use of both properties to accommodate nearly 400 children and some 46 teachers in two sessions each Sunday. This created a less than ideal situation when most parents had to hurriedly leave after the service to pick up children at Barrabool Road.

When the Roslyn Road property was sold in 1980, all Sunday school classes reverted back to Barrabool Road.

Teachers

There have been so many dedicated teachers prepared to pass on the teachings of Jesus to the children in the Sunday school. They had their reward as they watched the children grow both physically and in faith, especially when it culminated in some children's decisions to become full members of the church on their confirmation.

Lack of space and records prevents us naming all the teachers who have given their time and abilities to teach generations of Highton children in the Sunday school. Their loving Christian influence, combined with the Bible stories they told and the songs they taught would remain with those children throughout their lives.

The following are some memories of various Sunday school events, provided by our records and former teachers.

World Vision

It was decided that some of the Sunday school offerings in 1979 would be devoted to the support of a child through World Vision.

For two years from 1982, the Sunday school sponsored Paska Mary Allam, who was attending St. Joseph's Girls Boarding School in Madras, India.



Above: Paska Mary Allam second from the right. Photo provided courtesy of Freddie Weaver.

A Mile of Cents



In 1979, Freddie and Doug Weaver initiated a project where the Sunday school children collected small change, and each Sunday they would bring their cents for outreach projects. They eventually collected sufficient coins to make a line along the footpath from the Roslyn Road property and down Glenmire Street. The whole church became happily involved and supported the line of coins, which was converted to a cheque and forwarded to St. Philip's College in Alice Springs.

For other projects the children laid out lines of coins in the church foyer.



Left & Above: The children & coins. Photo provided courtesy of Freddie Weaver.

The following article was contributed courtesy of Carlene Gill in 2005.

The Weeping Cherry Tree – Planted in 1978

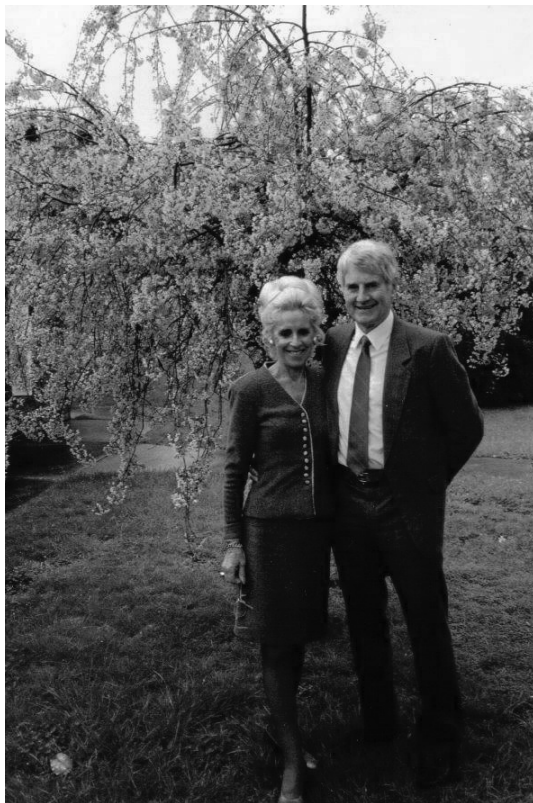
“Our story begins when our Sunday school children were collecting one and two cent coins for projects. The idea was to save enough of these brown coins to provide ‘Buggy Majors’ for the children at Shannon Park. Buggy Majors were at the time used for disabled children to lie on, and by using their hands to propel themselves around the room.

Each Sunday the children would lay coins out on the church floor, making a longer trail each week until we were able to provide these pieces of equipment.

The Sunday School kindergarten department had 35 or more children in attendance each week. The staff

consisted of Elsa Zimmer, Jennie Green, my husband Peter and myself. St. Luke's Preschool used our Sunday school room during the week.

The children continued to bring their parent's small change to Sunday school, and we purchased books for the Geelong Hospital's children's wards and Shannon Park. When the coins continued to flow in, it was decided to purchase something for our own church - a weeping cherry tree was the choice. I was startled to find that a bare leafed weeping cherry with a small trunk and three bare fronds at the top was priced at \$65. At that time it seemed so much money to spend, but soon I was making my way home with a large 'stick' with fronds hanging over the front seat of my little car.



Above: Carlene and Peter Gill in front of the weeping cherry tree, 1997

In due course we had a planting ceremony in front of the preschool with all the children involved in the task. We

prayed a dedication prayer, and we agreed that it would be good to see the tree bloom and grow over the years. Some children even imagined that perhaps they would be able to have photos taken on their wedding day in front of the tree if they were married in the spring.

We talked to this little tree as we passed on our way in and out of Sunday School, and I need say no more - the result is what you see each year in spring - when this wonderful creation bursts into full bloom and provides so much pleasure for everyone.”

Sunday School Superintendents

- 1950-1960 Sidney Adams
- 1960-1962 Ray Baverstock
- 1962-1964 Harold Best
- 1965-1967 Max Williams
- 1968-1970 Wes Marshman
- 1970-1975 Geoff Wootton
- 1976-1978 Ian Allan
- 1979-1980 Freddie Weaver
- 1980-1984 Annis Ballard
- 1984-1989, 1992 David Ellerton
- 1990-1991 Pam Seller
- 1993-1994 Ian Lyall
- 1995 Judy Clark

Sunday School Secretaries

- 1957-1958 Don Smith
- 1961 Ian Allan,
- 1962 Rod Bryant
- 1963-1966 Frank Fordham
- 1966-1972 Maurie Redfern
- 1975 Bob Pullin
- 1978 Carole Findlay

Sunday School Treasurers / Auditors

- 1950-1960 Norman McDonald
- 1960-1970 Laurie Johns
- 1985-2000 Ivan Stanway

The Sunday School account was closed in February 2000.



Above: Sunday school Christmas Play, December 1992, teachers were Carole Marks (left) & Judy Clark

Sunday Club

Numbers of students decreased gradually, and by 1998 the traditional Sunday school classes ceased to function, being replaced by the Sunday Club, formed to cater for primary and pre-primary age children, and organized by parents and other helpers. John Lambert was the convener of Youth and Families, and special breakfasts were held for children and adults once a month.

Kid's Church

The current concept of Kids' Church, implemented around 2000, is proving popular. Numbers may not be consistent, but when the children rejoin the service the minister encourages them to proudly show off their handwork and describe the day's teaching. The enthusiasm and talents of the children reflect the caring measure of the teachers. The children also rejoin the service when communion is served and when a baptism is celebrated.

Kids' Church is under the umbrella of the Worship Ministry Team. The following people were teachers in 2005/06.

- Jenni Verwoert (Convenor)
- Judy Boehm
- Judy Clark
- Donna Jackson.



Above: Kids' Church, December 2006

Creche

During 2005-2006, a crèche was been made available for babies and toddlers to be minded in the fellowship room during services.

Church Alive

A description of Church Alive was contributed to the 2001 Autumn Link by Lee Hauser as follows:

‘Church Alive is the new force in contemporary worship to hit Geelong.



At St. Luke's, there was a need to provide a service that would accommodate the needs of the youth that were attending on a Sunday. Resulting from a lot of prayer and hard work, it was born in February 2000. Week by week numbers slowly increased from 12 at the pilot service to currently having over 70 a week. Church Alive was part of the vision held by our minister, Rev. Marian Zaunbrecher and as this vision

was held by others, the strength of the service and the church community grew, as did the numbers. Advertising made a huge impact and is continuing to do so, with 10,000 informative cards being printed and distributed around the Highton-Belmont area, also advertising on radio Rhema FM.

Church Alive is designed for both the young and the young at heart, and as this was the focus group, the worship model of our other services had to be adapted to be relevant to today's youth. With the introduction of Andrew Pobjoy to the congregation, it was quickly realized that the standard of worship has increased dramatically. It was incredibly important to engage the youth and ensure that it was relevant to them. As a result, the themes of the services have been focused on the needs and pressures of youth. Examples from our current series of 'Feel the Beat of Life' are – 'You Matter' and 'Stuck Together but Falling Apart'. Church Alive is a great way to praise Jesus or start your walk, come and have a look, it's a blast!

Church Alive runs weekly at 6.30 p.m. every Sunday. The current series of 'Feel the Beat of Life' is continuing to the end of May."

The following names were supplied via Alison Lyons:

Church Alive musicians

- Andrew Pobjoy (Worship leader, pianist, keyboard and singer)
- Shelby Oliver (Piano and keyboard)
- Les Oliver (Piano, saxophone)
- Kate Saxton (Guitar)
- Cameron Baird (Drums)
- Martin Lawrence (Drums)
- James Savage (Trumpet)
- Andrew Jewell (Guitar)

Chorus singers included

- Emily and Lori Dawson
- Kate Saxton
- Jane Saxton-Hauser
- Lee Hauser
- Belinda Campbell
- Jenni Nixon
- Valma Oliver
- Nicole and Katherine Manks
- Verity White

In charge of the PA system, overhead and lighting

- Ann Fisk
- Cilla Bone,
- Joclyn Knapp
- David Nixon
- Matthew Boehm.

Church Alive carried its message to the youth of Geelong for three years.

Christian Education

The following quotation is printed in large letters on the wall of the Melbourne Public Library.

**BOOKS ARE THE THREADS
FROM WHICH THE FABRIC
OF OUR CULTURE ARE WOVEN**
R.W. Clement

The Christian's chief text book is the Bible, and there are also many other books that can help us in the study and interpretation of the Bible. We would be much the poorer in our faith without these.

Some books stimulate the readers to think and to discuss threads of culture, religion, faith, God's time, creation, the environment, evangelism, encounters with Christ, and many other topics. St.

Luke's has held study groups on many of those subjects.

Study groups require leaders and St. Luke's has been fortunate to have leaders with particular skills of communication; helping others on their spiritual journeys; sharing discoveries; and strengthening personal faith and ministry skills. Study groups, training days and seminars have been held "to provide the best possible opportunity for the development and growth of the leaders and the congregation, and to enthuse and motivate people to take up the opportunities offered."

Study Groups

Lenten studies have traditionally been held in the lead up to Easter, and the congregation has also supported Advent studies. Members have also enjoyed the revelations and fellowship gained from Kerygma studies led by Rev. Wes Trigg; Alpha studies, which are also conducted in many different churches; the KYB (Know Your Bible) course. Many members have attended Bible Study Fellowship which has been held at St. Luke's for thirteen years.

Resource and church publications regularly distributed to church members include *Crosslight*, *With Love to the World*, and *Frontier Services News*.

Subjects for discussion and study groups held at St. Luke's in recent years included:

- Environmental Issues: 'Renewing Creation – Listening to the Groans and Hopes of the earth'
- 'Kicking Habits – Coming Clean'
- '40 Days of Purpose'
- 'Sexuality and Leadership'
- Leadership training – 'Eyes Wide Open' and 'God's Word, God's World'
- 'Highway 41'

Education Ministry Team

The following article was contributed courtesy of Darcy Seller, convenor since 2004.

"The Education Ministry Team's Main responsibility is to meet the educational needs of the congregation. This involves providing opportunities for leadership training, organizing home study groups, promoting opportunities for continuing education at seminars and conferences, purchasing resource materials for the church library, supporting the training of pastoral care visitors, and arranging special events with an educational focus, such as films, expos, and visits by noteworthy speakers. The ministry team also acts as an 'umbrella' for mission cell groups which have emerged from earlier study groups.

In 2006-2007 the following activities were undertaken:

An afternoon workshop for small group leaders within the church.

Lenten Studies: Home groups of 8 to 12 participants, held over five to six weeks prior to Easter, examining how the Easter story relates to our daily life.

A modified Alpha Course, in which small groups of 10 participants were invited to meet at the church over four weeks to examine basic Christian beliefs.

Micah Challenge Bible Studies: Home groups of 10 to 12 participants, held over four weeks, exploring Christian responses to poverty.

A Gospel Study: A small group of 8 participants, meeting at the church over five weeks, examining St. Luke's Gospel in depth.

A Micah Challenge Steering Group, arising from a small group study on

poverty, meeting monthly to oversee the implementation of a strategy plan adopted by Church Council to fight local and world poverty.

Know Your Bible: A home group of 8 to 10 female participants meeting weekly to examine various books of the Old and New Testament in depth.

Church Expo: in conjunction with the Church Carnival in November, sited in the church foyer, highlighting many Ministry Team initiatives through displays, give-aways, music, video and DVD presentations and hands-on interaction.

Bandy Conference: 15 members attended this two day conference at La Trobe University, stimulating Church Council to formulate and document our “bedrock convictions” and core values.

Approximately \$200 worth of resource material was added to the church library in twelve months.

A visit by Geraldine Cox: Her talk on work with underprivileged children in Cambodia was attended by 60-70 people, many from outside the congregation.

The Al Gore film ‘An Inconvenient Truth’ was shown to an audience at St. Luke’s.

Petitions: One with over 100 signatures to the Federal Government requesting action on world poverty, and another with 75 signatures to the House of Representatives, urging action on climate change.

Rev. Tim Costello, Director of World Vision spoke at St. Luke’s in 2007.

A Congregational Education Needs Survey will be conducted in 2007, and

the findings will form the foundation for an Adult Education Framework.”

Social & Friendship Groups

Methodist Parents and Friends Association

The first meeting was held on 28 April 1960 and was attended by 25 parents and friends of the church. The office bearers were:

- Jack and Una McGibbon (Presidents)
- Jack and Winsome Cations (Vice Presidents)
- Brian and Jean Williams (Secretary – Treasurers)

Brief meetings were held monthly, followed by various activities e.g., films and discussion, a role-play, speakers from the Council for Christian Education in Schools and the Salvation Army, a social evening and a progressive supper. The secretary's note in the minute book from 21 September 1960 stated, ‘The evening was obviously enjoyed by all, and ended before dawn’.

A men's working committee was formed, initially to make and install cupboards and screens in the Sunday school. The committee comprised the following:

- Gwyn Jones
- Tom King
- Neil McDonald
- Jack McGibbon
- Don Slater
- Alan Strahle
- Brian Williams

The minister Rev. M S Box discussed the desirability of lay visiting and offered to provide lists to those who could undertake this work.

In 1961, the Parents & Friends members gave assistance at the annual church fete

and were involved in the impending stewardship campaign.

There are no attendance records available but the following members' names appeared in the minutes.

- Ray Baverstock
- Rod Bryant
- Lloyd Cole
- Klaus Gerischer
- Mrs Gerischer
- Norma Harrison
- Audrey Hill
- Ern. McCann
- Edna McCann
- John MacDonald
- Wes. Marshman
- Margaret Miles
- Les Perkins
- Ray Phipps
- Rex Smith
- Alan Strahle

The final recorded meeting was held on 17 May 1961.

Highton Methodist Men's Society

The first meeting of the society was held on 16 September 1962, and the constitution stated that the objects were as follows. "To instil a feeling of brotherhood and goodwill among the men of the church. To assist in any worthy cause, to further the welfare of the church generally."

The first office bearers were as follows:

- Tom King (President)
- Lloyd Cole (Vice President)
- John McDonald (Vice President)
- Howard Hinchliffe (Secretary)
- Les Perkins (Treasurer)
- Albert Fordham (Musician)

Speakers were invited to tea meetings, which were held one Sunday a month at the church. Wives and family members were invited occasionally to special meetings. Members provided practical

aid to church members, to needy people in the Highton community and gave Christmas hampers to disadvantaged Geelong families. An annual slide competition was held to raise funds.

By 1964, there were 270 active members in the Geelong Council of Methodist Men's Societies, and an annual communion service was held in different churches around Geelong. During 1966-1967 members of the society held working bees to clean and paint the walls of the vestry at the rear of the chapel, and 30 new chairs were painted for the kindergarten.

In May 1968, Rev. D Pentecost requested that members attend the next Geelong City Council meeting to lend support to the case against Sunday sport. In 1969-1970, the minister of the Highton Presbyterian Church, Rev. Brian Ball, and several members attended Society meetings. Transport was provided on request from the Mission to Seamen to enable ship-bound seamen to visit Sailor's Rest in Moorabool Street on Sunday evenings.

Members were thanked for assisting with church cleaning and organizing a Disposal Stall at the church mini fete in 1970-1971.

The following members attended the final meeting in 1971.

- Ian Allen (President)
- John McDonald (Vice President)
- Brian Williams (Secretary)
- Grant Harvey (Treasurer)
- Doug Cameron (Auditor)
- Lloyd Cole (Leaders Meeting representative)
- Geoff Wootton (Musician)
- Roy Barker
- George Berridge
- Dr Rod Clark
- Keith Hapgood

- George Hobson
- Jack McGibbon
- Ed Pescott
- Rev. Ron Yeats
- Ron Wise
- Tom Wise was unable to attend.

A comment from a former secretary, Ron Wise, "My memories of my time being involved with the Highton Methodist Men's Society are some of my fondest memories, as I was able to put my faith into Christian service".

Ladies' Church Aid To Uniting Church Adult Fellowship

This fellowship of faithful workers evolved from the Ladies' Church Aid, which commenced in September 1925 as described in Section 2 of this book.

In the 1950s it was usual for the pastorate minister, Rev. C Gallacher from the Geelong West Circuit, to attend the regular meetings of the Ladies' Church Aid, and records show Mrs. Gallacher presiding at meetings in 1955.

Vera McDonald and Linda Leigh were the secretary and treasurer at that time. In the 1960s, the first meeting of the year was usually held at the Botanical Gardens, and for several years, Mrs. Sutcliffe graciously offered her home in Sutcliffe Court, Highton for the annual meeting.

It was customary for each member to be presented with a posy of flowers on her birthday.

From 1955 to 1960, the ladies organised a yearly garden party in the church grounds, with a variety of stalls. The men were in charge of the produce stall. Later, the first evening bazaar was held with a broader base of workers, including Ian Allan who sold hot dogs for one shilling, and the MYF members who

were responsible for the white elephant stall.

In 1955, the ladies welcomed the opening of the new kitchen at the rear of the vestries. Recollections of coffee made with milk and coffee essence in a large copper is still a sweet memory for some people.

In 1960, it was agreed to change the name of the Ladies' Church Aid to the 'Highton Methodist Ladies' Guild'. Gwenda Box, wife of the minister Rev. M S Box, was elected President, Winsome Cations, Secretary, and Linda Leigh as Treasurer.

The tradition continued of inviting representatives from other Geelong Guilds to attend birthday celebrations.

Representatives from 22 other Geelong guilds attended the 37th birthday in 1962. Also that year, a group of guild members formed the 'Ladies' Evening Fellowship' with separate office bearers, to provide fellowship and opportunities for spiritual growth in the evenings for younger members of the congregation unable to attend daytime functions.

For many years the ladies of the guild would arrange a church-cleaning day. This entailed scrubbing the wooden floor of the church on hands and knees with a scrubbing brush and a bucket of water, sweeping, dusting and cleaning all other buildings. The ladies arranged rosters for cleaning, flowers, crèche, hostesses, and decorated the church for weddings. Later, weddings and funerals were also catered for at the church.

From 1968, an annual highlight was a Christmas entertainment afternoon in the hall, for elderly citizens from Grace McKellar and local nursing homes. Entertainment was provided on these and other happy occasions by the guild

ladies, the CWA choir, Wynsome Penn accompanied by her mother Merle Wall, Joyce MacRobbie accompanied by Elsie Eldridge, and Freddie Weaver accompanied by her mother Jean Tyler. Afternoon tea was served, and a small gift was provided for each guest.

Members of the guild participated in church services on Mother's Day, presenting each mother with a white spray of flowers at the church door. Harvest Thanksgiving items were distributed to local orphanages.

Many working bees were held at Vera McDonald's home in South Valley Road, to sort donated items, and parcels of clothing were then packed and sent to the missions. Food parcels were supplied for needy Geelong families, Glastonbury Children's Home, Cottage by the Sea, and Ministering Children's League. Sister Vera from Geelong City Mission also received assistance from the Guild over the years.

In 1972, with the Highton Methodist and Highton Presbyterian Churches establishing a Scheme of Cooperation, the ladies of both churches enjoyed several bus trips and joint activities.

In 1974, when the name of St. Luke's was chosen to represent the combined congregations and all church organizations, the 'Highton Methodist Ladies Guild' became 'St. Luke's Ladies Guild, Highton', and the inaugural meeting was held on 25 February 1976. The following office bearers were elected:

- Eunice Dunstan (President)
- Joan Jacka (Secretary)
- Mabel Brown (Treasurer)

Guests and speakers at meetings and functions were presented with a home-made loaf of bread cooked by Ann

Anderson. Grace Anderson later continued this tradition.

In July 1977, the 'Uniting Church Fellowship Mission Group' was formed from members of the Presbyterian Women's Mission Union, and some members of the St. Luke's Ladies' Guild.

- Joyce Robson (President - wife of the minister)
- Rev. J Robson (Secretary)
- Mabel Brown (Treasurer)

Guild fund raising included several street stalls held in Barrabool Road in front of the Dawson home, and in Bellevue Avenue. Members paid a small annual membership subscription and additional funds were raised by special demonstrations, trading tables at meetings, mini fetes and the Fellowship of the Least Coin (a small donation for each prayer offered). This worldwide movement provides funding for scholarships and mission work in developing countries. The donations were dedicated at each meeting. This tradition still continues in 2005.

During the 1980s a group of guild ladies formed 'Apex Catering' which raised \$700 in 1980, and \$406 in 1981. The ladies were always ready to assist with catering for various church activities such as stewardship teas, progressive dinners, parish fairs, inductions, luncheons and other celebrations.

In the past the Ladies' Guild has provided funds for carpet, chairs and curtains for the fellowship room, items for the manse, as well as regular financial contributions to the Property Board. Other organizations supported were St. Phillip's College and the Old Timers' Fete in Alice Springs, the local settlement of refugees, Leprosy Mission, Neighbourhood Care, the sale of charity Christmas cards, Christian Education in Schools, Concern Welfare and Peter and

Elizabeth McKenzies' work with Frontier Services.

For many years members of the congregation have been encouraged to save stamps for the Sammy Stamp program. The guild ladies would trim the stamps and send them off to the Synod office where they would be sold to stamp dealers. Over \$23,000 resulted from stamp sales in Victoria during 2005. Mrs. Val Garratt is currently the St. Luke's stamp convenor.

Through Synod, the UCAF publish *Net Work*, a small monthly magazine for members with news of a variety of Uniting Church and Fellowship activities throughout the state.

In February 1985, the separate UCAF Mission Group combined with St. Luke's Ladies' Guild to form the 'Uniting Church Afternoon Fellowship', open to all church members. Ten years later the name changed yet again to 'Uniting Church Adult Fellowship - Afternoon Fellowship'.

Members helped for many years at Trading Partners, a Uniting Church retail business in Geelong selling imported goods from developing countries.

During the 1990s, friendship afternoons were held at the home of Olive and Jack Hunt, and members enjoyed their extensive gardens noted for the beautiful roses.

The following are annual events supported by UCAF members.

- Inter-church Fellowship Day, a lunch followed by a service
- World Community Day
- Christian Women's International World Day of Prayer

The Day of Prayer dates back to the 19th century when Christian women of the US and Canada initiated co-operative

activities in mission around the world - including the role of prayer in mission work. By 1927, the call was issued for a World Day of Prayer. An international committee was formed in 1968 to involve people from all over the world. A special theme and country was chosen for each year. The 2006 theme is 'Signs of the Time', prepared by South Africa.

The number of causes, missions, welfare organizations and individuals supported financially by this singular group is a very long list, and all members are to be congratulated. An indication of efforts achieved is that from 1991 to 2003, an amount of \$22,816 was raised and distributed.

Grateful mention should also be made of the voluntary commitment of the auditors, Mr Kingsley Kent from the 1970s to 1986, and Mr Ivan Stanway from 1987 to 2006.

At a church service to celebrate 80 years of Christian devotion, held on 25 September 2005, the Rev. Rachel Franklin and the congregation congratulated all members of the UCAF. Members were presented with a certificate of appreciation and flowers. Festive balloons also added to the celebration.

The actual 80th birthday meeting was held on 28 September with the theme 'Remember When'.

Note that Mary Dawson is the longest serving member of the Fellowship, and Lila Stanway is the longest serving treasurer.

The following is an alphabetical list of members of the executive since 1955:

Presidents

- 1955-1957 Mrs C Gallacher
- 1958-1959 Mrs C Stroud
- 1960 Gwenda Box

Steadfast Through Change

- 1961-1962 E Hobson
- 1963-1966 Gwenda Box
- 1967 Aileen Barker
- 1968 Margaret Pentecost
- 1969-1971 Merle Wall
- 1972-1973 Mary Dawson
- 1974-1976 Eunice Dunstan
- 1977 Ann Anderson
- 1978-1979 Joan Bell
- 1980-1981 Val Garratt
- 1982-1984 Eunice Dunstan
- 1985-1986 Joan Bell
- 1987-1988 Olive Hunt
- 1989-1992 Mary Jones
- 1993-1994 Jean Harvey
- 1995-1999 Mary Thomas
- 2000 Mary Jones
- 2001-2007 Mary Thomas

Secretaries

- 1955, 1958-1959 Vera McDonald
- 1960-1963 Winsome Cations
- 1964-1968 Joan Jacka
- 1969-1975 Mavis Iskov
- 1976-1977 Joan Jacka
- 1978 Val Garratt
- 1979-1980 Eunice Dunstan
- 1981-1986 Frances Crawford
- 1987 Val Garratt
- 1988-1989 Frances Crawford
- 1992-1993 Val Garratt
- 1994-1995 Val Hines
- 1996-1997 Val Garratt
- 1998-1999 Frances Crawford
- 2000-2007 Val Garratt

Treasurers

- 1955, 1958-1965 Linda Leigh
- 1966 Joyce Best
- 1967-1971 Mary Dawson
- 1972-1973 Jean Harvey
- 1974-1975 Jean Prime
- 1976-1978 Mabel Brown
- 1979-1982 Jean Harvey
- 1983-1990 Mabel Brown
- 1991-2005 Lila Stanway
- 2006-2007 Glad Beckham



Above: The UCAF group 2004

Back Row L – R: Joan Smith, Rev. Eric Thomas, Patti Tinney

Middle Row L – R: Peg Vigar, Bernice Hodgson, Jean Prime, Frances Crawford, Olive Hunt, Glad Beckham, Val Garratt, Ena Reid, Joan Bell

Front Row L – R: Lila Stanway, Nancy Ryan (dec. 2005), Mary Thomas, Beth Parr

Absent: Heather Tonkin, Norma Fleming & Mary Dawson



Above: The UCAF group in 2006

Back Row L – R: Joan Bell, Olive Hunt, Beth Parr, Ena Reid, Mary Dawson, Bernice Hodgson, Glad Beckham, Val Garratt, Mary & Eric Thomas, Joan Smith

Front Row L – R: Jean Moore, Norma Fleming, Frances Crawford, Peg Vigar, Lila Stanway

It is appropriate to finish this story of the UCAF with these thoughts written in 1989 by one of its members, Frances Crawford:

‘In a world where many are lonely and often feel lost and frightened, it is a great blessing to ‘belong’.

The UCAF is a good place to belong.

It provides a place and a gathering in which members receive warmth and love and the reality of friendship which is a strength and stimulus to each member’.

Ladies’ Evening Fellowship

The church community is often referred to as ‘The Family of St. Luke’s’, and the history of its women’s groups reads very much like a family tradition. The active caring generation takes up the challenge of mission, fellowship and fund raising, and they in turn hand over the reins to the next generation, to use their different gifts and talents to continue the ministry.

The Guild members were still very active in 1962, but as so many young families were joining the church, it was felt necessary to provide evening fellowship meetings for the younger members of the congregation.

In October 1962, a recommendation was sent to the Leader’s Meeting that the Evening Guild have their own office bearers. A report in the *Highton Methodist’s Bulletin Vol. 1, No. 1*, in November 1964, refers to the annual meeting of the Ladies’ Evening Fellowship held in March, so the first meeting would have been held in March 1963. Meetings of the Ladies’ Evening Fellowship were held in member’s homes, with an attendance between 20 and 25. The minister’s wife, Gwenda Box, was elected president and Jenny Hinchliffe was the secretary in 1964. Meetings commenced with devotions.

Interesting activities included a tour and supper at Sunicrust Bakeries; Rev. and Mrs Weeks showed slides of their trip to England and Scotland; a visit to a health

studio, where some members enjoyed sauna baths, while others participated in some physical exercises.

Fellowship members mended clothing for the Aboriginal Advancement League. A large Greek family living in Norlane was also helped, as the husband was ill and they had six children to feed and clothe.

Unfortunately the minute books for the 1960s are missing, but reports in *The Highton Methodist Bulletin* show that in 1963, the Ladies’ Evening Fellowship membership was 33, in 1967 it was 54, and by 1969 it had grown to 63.

In 1971, the following was stated in the constitution of the Highton Methodist Ladies’ Evening Fellowship.

“OBJECTIVES: To foster a sense of mission, unity and fellowship between the women of the church; to provide common goals of interest, activities and service for the women of the church.”

A membership of 48 was recorded in 1971, with an average attendance of 30 at the monthly meetings. The office bearers were:

- Annette Packett (President)
- Carole Findlay (Secretary)
- Alison Reid (Treasurer)

The Rev. Ron Yeats thanked members for arranging rosters for church flowers, cleaning, child care in the crèche, and for providing toys for the children in the crèche.

Functions

A Baby Sitting Club was formed in 1971. As many young families had no wider family members to provide baby sitting, this was very well patronised, and many friendships were formed.

Steadfast Through Change

A popular recipe book entitled *LEF'S Chefs* was compiled, and over 1,000 copies were sold at 35 cents each.

Another successful fund raising scheme introduced was 'Time and Talents'. Members were given fifty cents and asked to use their time and talents to increase it to one dollar or more.

A projector and screen were purchased for the Sunday school, and the Methodist Million Appeal was also supported.

The fellowship paid for the secondary education of an aboriginal girl at Echuca during 1971.

Members participated in the guild Christmas functions for the elderly for several years.

During 1972, with the Highton Cooperating Parish established, combined ladies Methodist-Presbyterian meetings were held, and in March 1973 on the tenth anniversary of the group, the name was changed to the 'Highton Evening Fellowship'.

Outreach projects at this time included funding the education of two students in New Guinea, through Noel and Sheila Reid working there at that time; sending regular funds to David Odd, the Principal of Manggai High School, and supporting student Ruth Mathias. Raronga Theological College and Force Ten also received support for many years.

In 1973, the fellowship paid for new vinyl for the kitchen adjacent to the hall. A successful fashion parade, a trading table at meetings, a pet show, a sausage roll drive and film night provided funds for projects.

In 1974, members commenced folding the quarterly magazine for posting. This has been a long-term commitment for

some ladies, particularly Jill White who organized the folding and posting for many years.

Mr Doug Cameron commenced auditing the fellowship accounts in 1974, and continued this task gratis for ten years.

The Ladies' Evening Fellowship had a representative on the Leader's Meeting for some years.

March 1975 saw another change of name to 'St. Luke's Ladies' Evening Fellowship Highton'.

Baby Sitting Club No. 2 began operation, and recognising the importance of fellowship and the support for young families, regular morning coffee meetings were held in homes to enable members to meet each other informally. Several successful progressive dinners were held at member's homes.

A second recipe book was compiled from member's recipes in 1975.

In 1976, the Ladies' Evening Fellowship linked up with 'Fellowship of the Least Coin' – as described in the UCAF story.

Regular working bees were held to make items and to organise the cake and sweet stalls for the Parish Fairs. Members were also busy making rugs for the elderly and scrap books for the Geelong Hospital.

In 1977, the membership was 80, and a Fellowship Choir was formed, providing much pleasure at various functions.

During the next few years fund raising events such as fashion parades, progressive dinners, parish fair stalls, lunches and catering provided great fellowship and growth. The Ladies' Evening Fellowship also arranged the annual cleaning of the hall kitchen and

Steadfast Through Change

provided white flowers for the Mother's Day services.

Members attended and participated in local Fellowship Days, Women's World Day of Prayer, World Community Days, Uniting Church Fellowship combined functions and Easter services.

Donations were made to St. Luke's Property Board, Manggai High School, Chaplaincy Appeal, Force 10, Geelong Hospital Auxiliary, Christian Encounter, Life Line, South Barwon Refugee Resettlement, Geelong Hospital Visiting Program, and regularly to the Fellowship of the Least Coin.

The Ladies' Evening Fellowship members assisted church families where the mother was ill or in hospital, through the Family Support Service. Some members helped in the office with typing, duplicating and the regular parish paper folding.

By 1982, the membership was 35, and \$1,553 was raised during the year.

The year 1983 saw the opening of the new Worship Centre at St. Luke's, and the Ladies' Evening Fellowship, raised the large sum of \$3,079.47, mainly by catering for several functions. This provided for the purchase of new hymn books, cutlery for the kitchen, a new vacuum cleaner, tapes for recording services, donations to the Building Appeal Fund, Chaplaincy Fund, People in Partnership, and Youth Presbytery Officer.

Banners

Mrs Jenny Van Ginkel designed and constructed a Christmas banner for the church, and in 1984 she also prepared instructions and materials for a large family banner for the foyer. Church families and organizations depicted their church involvement and interests on

squares, which were then attached to the large backing.

In consultation with Rev. R Patterson, Jenny made a series of Easter banners for St. Luke's in 1985 and later, banners for the celebration of Pentecost, weddings and baptisms. The LEF met the cost of all the banner materials. Other valued work by Jenny is described in the Visual Art chapter.

Name Change

In 1985, the name of St. Luke's Ladies' Evening Fellowship was changed to 'Uniting Church Fellowship – Evening Group', and members received copies of *UCAF Network*.

A minute of thanksgiving was recorded in the Minute Book in August 1985, to acknowledge the life of and wonderful contribution made by Mrs Vera McDonald to St. Luke's and the Highton community.

Catering was again a source of income during 1985, with Glenda Murrant the convenor. Functions catered for were the very successful Australiana Night at St. Luke's, a Presbytery dinner, birthday parties, Masonic Lodge dinners, and weddings.

The tremendous efforts of the Catering Committee resulted in \$1,000 being transferred from the Catering account, and a total of \$2,500 was dispersed to the following projects.

- A project in India \$350
- Church building in the Philippines \$350
- Water pots in Africa \$300
- Chaplaincy in Schools \$200
- Grace McKellar Chaplaincy \$100
- Geelong Hospice \$200
- Concern Welfare \$100
- Karingal \$100
- People in Partnership \$300

Steadfast Through Change

Joy McAvaney was the Family Support convenor until her departure for Canada in 1985. Dorothy Turrill continued this pastoral care in crisis situations until 1987.

Elizabeth McKenzie commenced the Cradle Roll and cards were sent to the children on the anniversary of their baptism. Annette Packett took over this task in 1986.

Jean Sinclair organised the Fellowship for Young Mothers at St. Luke's, while other members participated in hospital visiting.

In 1986, a further \$250 was forwarded from the catering account to Rev. Martin Dulnuan of the Philippines, to assist with their church building.

Income for 1986 was derived from a Chinese banquet and a fashion show, both held at the church; a stall at Regent Street; Fellowship of the Least Coin, and sale of notelets.

The funds were allocated to the Synod Rural Crisis People in Partnership Projects in Australia and Thailand and also to chaplaincy in Geelong schools.

In 1987, it was agreed to make and sell casseroles at the church fair instead of organising the art and craft stall.

A decision was made to close the catering account which had been audited by Keith Turrill. The balance of \$354 was transferred to the UCF evening group account in October 1987 and distributed to the Chaplaincy Fund, Orana, and the religious education teachers for equipment, leaving a credit balance of \$195.47.

At the AGM on 26 November 1987, it was decided to try a different program

for 1988, and the following committee was formed to organise a syllabus:

- Glenys Eagles
- Margo Fisher
- Glenda Murrant
- Jill White,
- Glenice Thompson
- Anne Salvado
- Jenny vanGinkel

There is no record of meetings or bank transactions during 1988, 1989 and 1990.

New Committee – Old Name

In April 1991, Carole Findlay and Joy McAvaney arranged a meeting attended by 18 ladies. The future of the group was discussed, and it was agreed that the main aim would be fellowship rather than fund raising. The name would revert back to the 'Ladies' Evening Fellowship' and the following women would form a committee.

- Carole Findlay
- Joy McAvaney
- Glenda Murrant
- Annette Packett



***Above:** St. Luke's Evening UCF, November 1986*

***Back Row L-R:** Jill White, Barbara Patterson, Claire Peel, Dorothy Turrill, Joy Hicks, Joy McAvaney, Joyce Osborne, Beth Allen*

***Front Row L-R:** Glenys Eagles, Margot Fisher, Anne Salvado, Jenny van Ginkel, Glenda Murrant, Lorraine Gready, Glenice Thompson, Erril McGibbon*



Above: Ladies' Evening Fellowship in the Botanical Gardens, February 1991. L-R: Unknown, Yvonne Campbell, Carole Findlay, Margot Fisher, Beth Allen, Jill White, Marion King, Joy McAvaney, Diane Mansfield, Judy Blackmore, Jayne Salmon, Mary & Rev. George Grimmett, Rev. Chand Prasad, Frances Crawford, Unknown & Lorraine Gready.



*Above: Ladies' Evening Fellowship in the Botanical Gardens, February 1991
L-R: Mary Grimmett, Carole Findlay, Joy McAvaney, Judy Blackmore, Diane Mansfield, Marion King, Frances Crawford, Jean Williams, Lorraine Gready & Jill White*

Interesting meetings and activities were arranged, and in 1992, members started weekly walks along the Barwon River for exercise and fellowship.

In 1993 the group contributed \$500 toward the cost of rewiring the Barrabool Road manse, and in 1996, following a successful dinner and show in the hall, a donation of \$707 was made to the Sunday School to help their fund raising for the Chikinkata Hospital in Zambia, Africa, where Drs. Richard and Leanna Grills were working. Six large print hymn books were also purchased for the church.

Pam Seller reported that from June 1996 to February 1997 the Pastoral Care Support Group had provided support for six people for one or more weeks.

The Fellowship decided to meet bi-monthly at the start of 1997, and in February 1998 it was decided to disband the group. The Pastoral Care Support Group would continue to provide help,

Steadfast Through Change

food and support with convenor, Pam Seller.

Glenda Murrant invited the Ladies' Evening Fellowship members to her home on 9 July 1998 for a 'Christmas in July' evening, and the following attended:

- Lorraine Angus
- Mary Baird
- Judy Clark
- Joy McAvaney
- Kath McLennan
- Joan Marshman
- Annette Packett
- Pam Seller
- Jill White
- Nancye Wurm

Glenda advised that two large pottery vases had been purchased for church flowers, at a cost of \$138. Mary Baird moved that the St. Luke's Evening Fellowship bank account held at the Highton Commonwealth Bank be closed following payment for the vases, and that any remaining money be forwarded to the Council for Christian Education in Schools, Geelong Auxiliary. The motion was carried unanimously.

Subsequently the account was closed on 16 April 1999 and a cheque for \$203 was forwarded to the Council for Christian Education in Schools.

Executive members of the Ladies' Evening Fellowship from 1964 to 1998.

| | | | | | |
|-------------|--|-------------|--|--|--|
| 1964 | Gwenda Box (President) Jenny Hinchliffe (Secretary) | | | | Nan Cowey (Treasurer) |
| 1970 | Elizabeth Williams (President) Sheila Reid (Secretary) Meg Seller (Treasurer) | 1973 | | | Meg Seller (President) Lois Voller (Secretary) Pat Polley (Treasurer) |
| 1971 | Annette Packett (President) Carole Findlay (Secretary) Alison Reid (Treasurer) | 1974 | | | Wenda Saxon (President) Beatrice East (Secretary) Lorraine White (Treasurer) |
| 1972 | Rae Denison (President) Barb. Wootton (Secretary) | 1975 | | | Barb. Wootton (President) Kerri Moore (Secretary) Julie Smith (Treasurer) |
| | | 1976 | | | Pam Seller (President) Mary Pelton (Secretary) Judy Clarke (Treasurer) |
| | | 1977 | | | Alison Reid (President) Annis Ballard (Secretary) Stella Pullin (Treasurer) |
| | | 1978 | | | Joan Jackson (President) Beth Allen (Secretary) Joy McAvaney (Treasurer) |
| | | 1979 | | | Valerie Clarke (President) Glenice Thompson (Secretary) J. Dalton (Treasurer) |
| | | 1980 | | | Judy Clark (President) Marion King (Secretary) Lois Voller (Treasurer) |
| | | 1981 | | | Jenni Currie (President) Joy McAvaney (Secretary) L. Taylor (Treasurer) |
| | | 1982 | | | Stella Pullin (President) Meg Seller (Secretary) Dianne Fleet (Treasurer) |
| | | 1983 | | | Beth Allen (President) Valerie Grills (Secretary) Dianne Fleet (Treasurer) |
| | | 1984 | | | Jenny van Ginkel (President) Barbara Patterson (Secretary) Joy McAvaney (Treasurer) |
| | | 1985 | | | Lorraine Gready (President) Elizabeth McKenzie (Secretary) Erril McGibbon (Treasurer) |
| | | 1986 | | | Jenny van Ginkel (President) Margo Fisher (Secretary) Anne Salvado (Treasurer) |
| | | 1987 | | | Millie Lehmann (President) Glenda Murrant (President) Margaret Cameron (Secretary) Beth Allen (Treasurer) |
| | | 1992 | | | Convenors • Carole Findlay • Glenda Murrant |

1993 Convenors

- Glenda Murrant
- Joy McAvaney

1995 Convenor

- Joy McAvaney

1996 Convenor

- Stella Pullin

1997 Convenor

- Stella Pullin

1998 Convenor

- Glenda Murrant

Evening Craft Group

For several years an evening craft group operated independently of the Ladies' Evening Fellowship. This group provided a friendship base for the ladies interested in craft. The following women were among the members:

- Lorraine Angus
- Mary Baird
- Joy McAvaney
- Erril McGibbon
- Kath McLennan
- Jill White
- Joan Marshman
- Glenda Murrant
- Nancy O'Loughlin
- Stella Pullin
- Annette Packett
- Nancye Wurm

After the Ladies' Evening Fellowship disbanded, the craft group continued to meet a social need.

The following article was supplied courtesy of Barbara Cocks, secretary of the craft group.

"We are a small group of about twelve that enjoy craft, and initially made articles for the church fairs.

In June 2000, we agreed to take over the organizing of the funeral catering at St. Lukes.

The catering would not be possible without the generous assistance of the ladies of the congregation, who provide home made cakes and slices. We are also grateful to the men who set up the hall on each occasion. The funds raised have enabled us to contribute to the following charities.

- The Bushikori orphans in Uganda, in the years 2004 and 2005.
- Fifty appliquéd calico bags were also made for the Bushikori children to carry their school books in.
- Cottage by the Sea, in the years 2004 and 2005.
- Oak Tree Foundation, inspired by Hugh Evans, Young Australian of the Year in 2004.
- Donation to the Bairo Pete Clinic, East Timor, following a visit to East Timor by Judy and Dr. Rod Clark.
- The Geelong Advertiser's "Adopt-A-Family Appeal" in the years 2001 to 2005. An average of \$200 was spent on each allocated family.
- Guardian Angel Knitting Program in 2005 - garments were donated to World Vision.
- In June 2005, \$4,000 was donated towards a new dishwasher for the upgraded church kitchen.

Members have enjoyed social outings and fellowship during the year, such as a trip to Sorrento by ferry and luncheons at various restaurants."

The following were members of the Evening Craft Group in 2005'.

- Mary Baird
- Judy Boehm
- Barbara Cocks
- Jill White
- Lesley Gunning
- Alison John

- Barbara Hunt
- Roslyn Miles
- Joy McAvaney
- Dorothy Turrill
- Nancye Wurm

‘Crafty’ People

The following article was contributed courtesy of Jean Williams, convenor of the Crafty People:

“In February 1984, a group of ladies interested in craft started meeting every Monday afternoon in the fellowship room.

A wide variety of craft items were produced using old skills and learning new ones, and the group became known as ‘Crafty People’.

We enjoyed a variety of speakers and demonstrations such as floral art, rug making, bread making, soap making, knitting hints, basketry, cross stitch, porcelain dolls, costume jewellery, card making & embroidery.

During the 21 years, we have provided items and financial support for St. Lukes, Concern Welfare, Cottage by the Sea, Mercy Family Care, Frontier Services, St. Phillips and the Old Timers Fetes in Alice Springs.

We have knitted squares for rugs for local and overseas missions, also jumpers, vests, booties, and hats for Concern, and trauma bears for the Red Cross. Some years ago we knitted two sets of figures depicting a nativity scene, one was for St. Luke’s and one for the Highton Primary School.

Members have produced many interesting and practical items, both for themselves and family members, while enjoying the company of ‘Crafty’ members.

Although fund raising was not our initial goal, we have organized Cake and Craft Stalls in the Highton shopping centre for ten years. Members of the congregation have generously provided cakes and other items for sale.”

In 2003, we organized a very successful Doll & Bear Show in the hall, and have provided items for the craft stall at the church fair. We are pleased that our efforts over the last twenty-one years have realized over \$12,000 for the benefit of St. Luke’s, Concern, Cottage by the Sea and the other organizations mentioned previously.

The group disbanded in February 2006. However, firm, caring friendships have been formed over the years, and the group will continue as a Friendship Group, meeting monthly in member’s homes.

Subsequently, during a church service in March 2006, Jean Williams was presented with flowers and a Certificate of Recognition for coordinating the Monday Craft Group over 21 years.



*Above: Crafty People, November 1986
L-R: June Pearce, Dorothy MacDonald,
Doreen Ring, May Wise, Jean Williams,
Pearl Stokes, Nell Harper & Muriel
Trounson*



Above: The Nativity Scenes made by crafty members, November 1996

Back Row L-R: Jean Williams, Linda Leigh, Amy Nichols, Nell Gribben, Jessie Adams & Mary Thomas

Front Row L-R: Nell Harper, May Wise, Doreen Ring & Audrey McKenzie



Above: A street stall in Bellevue Avenue, December 2004 organised by "Crafty People".

L-R: Glenis Stewart, Joan Smith, Jean Williams, Jill White, Audrey McKenzie and Doreen Ring



Above: Crafty Ladies December 2004

L-R: Lorna Whitehead, Peg Vigar, Nell Gribben Joan Smith, Mary Thomas,

Doreen Ring, Thelma Taylor, Audrey McKenzie, Jean Williams and May Wise

St. Luke's Friendship Groups 1987-1988

These groups were organized by Pam and Mark Seller in 1987 and 1988, with 107 family units involved. Groups of four or five families enjoyed sharing meals and other activities once a month, as well as attending combined activities suitable for all age groups.

New families particularly appreciated these events.

Prayer Chain

The Prayer Chain was initiated by Daphne Stewart in March 1984, and it was continued by Joyce Champion as convenor in August 1985 until 2006. The Prayer Chain is a group of caring people who pass on to those listed, the names and details of people who would like special prayers for those in crisis or difficult situations. The current convenor is Frances Crawford.

Youth Clubs

With the influx of young families to Highton in the early 1960s, the Highton Methodist Church formed Junior and Senior Methodist Youth Clubs in 1964.

Led by Ed. Pescott, with encouragement from the minister Rev. Steve Box and several parents, twenty to thirty juniors attended activities fortnightly. The syllabus included an evening at the Bowl-a-matic, swimming at Eastern Beach, a BBQ, a record playing evening and a trip to Luna Park.

For young people fifteen years and over, the aims of the Senior MYF included, 'Fellowship through service; worship; education and recreation'. Leaders were

Steadfast Through Change

Tom Harding, Don Robinson and their wives.

Close ties were maintained with the Highton Presbyterian young people, PFA, and in 1974 the St. Luke's Cooperating Parish canvassed the young people of sixteen and upwards to ascertain their interests. Consequently a Senior Youth Club resulted and the following people became members.

- Anne Baverstock
- Narelle Box
- Graeme Bottger
- Sandra Dickson
- Jennifer Garrard
- Diane Glasson
- Bruce Harvey
- Grant Howard
- Libby Hunt
- Wally Hunt
- Ian Lonergan
- Rob. McTavish
- David Perkins
- Sandra Perkins
- Jamie Richardson
- Kerrie Rogers
- Brenda Shelley
- Joanne Tate
- Jennifer Thornton
- Jenny Turrill
- Peter Williams
- Bev. Worner

Members will have fond memories of attending services, dances, films, discussion evenings, cabarets, fetes and concerts and making new friends.

The following people were leaders of the Senior Youth Program in 1976.

- Ian Allan
- Karen Bradshaw
- G. Diamant
- Frank Fordham
- Dianne Glasson
- Phillip Hapgood
- Phillip Harvey

- Rod Perkins
- Darcy Seller
- Ann Stonehouse
- Ann and Judith Tantau

The interest and support of the parents was essential, especially when church camps were organised.

The success of any youth club depends on the leaders who are prepared to be role models, using their time and experience for the benefit of the young people. It is difficult to mention all the leaders by name, but they can derive satisfaction from having provided church-based learning activities and discussions, together with a sense of belonging and friendship to the young people in their care.

St. Luke's youth leaders have influenced the lives of our young people, from the older brothers and sisters in the senior group down to their siblings in the juniors, indeed far too many names to list here.

Numbers fluctuated, and records show John Findlay starting a Senior Youth Club at St. Luke's in 1980.

By 1990, a Youth Council was formed to co-ordinate the activities of the junior and senior clubs. The following people were members of the council.

- Ken Anderson
- Emma Campbell
- Bill Chittenden
- Noel McMillan
- Jeff Moran
- James and Susan Murrant
- Jenny Neumann
- Phil Phelan
- Pam Seller
- David White

Youth church services were organised and several youth elders were elected.

Numbers declined until 2002, when Andrew Jewell was employed for ten months as a Youth and Family Worker. Andrew revived interest in the youth club called 'Intermission', with regular activities held in the chapel complex.

Pastor Iain Nixon supported the declining group until his departure from St. Luke's in 2005.

New Group – New Leaders

The following article was contributed by courtesy of Emily McClelland, Youth Leader, in 2007:.

"The Mission Outreach Team discussed recommencing a youth group early in 2004, as there was nothing for the year six to year nine age range. This would give continuity from the Sunday school programs, which were more suited to children under ten.

Linda Salamy, Anne Fisk and Emily McClelland developed a program for such a group that would meet on alternate Fridays from 7 to 8:30 p.m. during school semesters. The aims were to provide bible study, Christian development and social activities for this cohort.

The first official meeting held on Friday March 3 was multicultural, as English was the second language for over half of the group, including three children of a Sudanese family being supported by St. Luke's.

Attendance varied between five and seven children who elected to name the group 4F4U - "Friendship, Faith, Fun and Food For You." Activities included games, movies, craft and spa nights. In the period 2006-2007, fewer Sudanese but more young children have been attending, with ages ranging from year 4 to year 7, and an average roll up of eight to twelve children.

Additional assistance by Sue Anderson as 'locum parents', has replaced Linda and Anne, and Serge Corbeil has offered to run a games night every month or two. This has widened opportunities for additional activities. These have included tennis nights, preparing morning tea for the Sunday church congregation, and an overnight camp that included horse riding, night bush walks, making damper and playing in the hay.

Future plans are to involve the young people of the church in the Micah Challenge program, to make them aware of the people who are suffering overseas, and to learn how they can help."

SLAG

(St. Luke's Adult Group) 1983 – 1986

The following article was contributed by courtesy of Stephen Lamont, Convenor in 1986.

"SLAG was formed by a group of people in the 18 to 25 year old group, who desired to express some of their ideas and feelings towards God and religion, and do so in the form of a church service. It was designed to be a one-off affair but the group stayed together, expanding and shrinking in numbers over the years.

SLAG has now closed as a group, not because it failed to do what it set out to do, but because the people who comprised SLAG have developed and are pursuing further interests.

These interests include the completion of tertiary education and the commencement of employment, not necessarily in Geelong; also a greater involvement in sporting and social groups such as Rotaract and Apex. Marriage and engagement have even tempted a few!

The phenomenon of pursuing further interests is not only happening in SLAG, it is a universal phenomenon which is happening to most groups in the SLAG age bracket.

SLAG grew into a group because it fostered the ideas of young people and became an avenue to express them. From within SLAG came bible studies, interaction with other youth groups on both spiritual and social aspects, youth services, three youth elders, one full elder and a member of the ministerial selection committee. If SLAG had not been formed, all of this may never have eventuated.

SLAG has run its term. However, in the future there will evolve another group similar to SLAG because youth groups fill the desire for young people to express their love and faith in God with peers, fellow Christians, and ultimately as part of the family of St. Luke's."

Note: The SLAG monthly newsletter was called *Dribble*.

NCYC

The Methodist Church commenced the National Christian Youth Convention in 1954.

The convention is held every two years in a different state of Australia, and draws together young people from all round Australia and overseas.

Each convention has a theme, and the theme for the 50th anniversary of NCYC held in Adelaide in 2005 was 'Live This Life'.

St. Luke's has provided financial support to send young people to NCYC over the years, and Ken Anderson has spearheaded several successful fund-

raising functions to assist with travelling expenses etc.

Members of the congregation also provided leadership and practical support when the convention was held in Geelong in 1999.

Countdown to Christmas

The following article was provided courtesy of Pam Seller:

"Countdown began in 1999 under the direction of Rev. Marian Zaunbrecher.

The program consists of three sessions held once a week immediately prior to Christmas Eve, when Jesus' birthday is celebrated in the church, and families are invited to attend. Children from local primary schools and the kindergarten are invited to register for the program together with those of church families. As the children arrive at 3:45 p.m., afternoon tea is served, and then a time of singing and Christmas stories is held in the church, followed by craft activities in the hall. Kindergarten age children enjoy activities in the preschool building.

An Easter Expo was also held in 2002 but this was not continued in later years.

In 2005, thirty-two children attended the Christmas program and twenty people were involved in the organization. This included leading worship; organizing the music, projector and sound equipment in the church; setting up the hall, preparation and distribution of enrolment forms and advertising material; enrolling and supervision of children; preparing the handcraft, also afternoon tea and fruit for the children and their parents."

Church Library

Robert Packett, Margaret Whiting and Ralph Williams started the first church library at St. Luke's in 1978. The Elders agreed that all members would benefit from the opportunity to borrow and read books that would be helpful and inspiring in our understanding of the Christian faith. Books were donated and Margaret Whiting set up the system of cataloguing and recording the borrowing of books.

In later years the church council has allocated funding for the purchase of new books. The bookcase is located in the hall, with a folder for borrowers to record the details of the books on loan. In October 1999, Wenda Saxon was appointed librarian, to be assisted by Una Trigg.

Book Club

The following article was provided in February 2007 by Rev. Wesley Trigg, convenor of the Book Club.

“The club was started by Robert Patchett in the 1980s, and after a brief hiatus, started up again. At present we have 12 people in regular contact and two more potential members. We meet monthly in the homes of our members on a rotational basis and the host or hostess for the month becomes the leader for that occasion.

We obtain books from the UCA Centre of Theology & Ministry, Melbourne, (formerly from Otira the UCA Centre for Lay Education). They provide a list of books available, and post the monthly selection to us. We then pay the return postage.”

Communication Team

The church is no different from any other large organization, and informing members of events, dates, news and messages of faith is a necessity. We are grateful for the time and expertise contributed by so many members of St. Luke's to produce regular publications since 1964.

During the compilation of this church history the copies of the weekly, quarterly, and other publications have been an invaluable source of information.

Highton Methodist Bulletin

Jack Cations edited the first *Highton Methodist Bulletin* in November 1964. In later editions during the 1970s the work of artist Robert Tantau was featured on the covers. Copies of these bulletins can be found in the church archives.

Highton – Barrabool Hills Parish News

In November 1972, Jack Cations also edited the first *Highton-Barrabool Hills Parish News*. Pam Wight then produced the news in 1974, and the 1976-1978 editions were a team effort with Annette Packett editor, and Carlene Gill, Pam Seller, Annis Ballard and Wenda Saxon typing and duplicating the pages.

An addressograph system was used to label the envelopes at this time.

The next editor was not named until Bob Pullin took up the challenge from 1981 until 1983, with typists Stella Pullin and Judy Angus (Lyle). Jill White coordinated a wrap and dispatch team. Barbara Twentyman followed Bob Pullin editing the 1988-1989 issues.

Alf Swan took on the task in 1990 to 1995, assisted by typists Sue and Raelee

Anderson. Glenis Stewart was editor from 1995 to 1998, and Dorothy and Keith Turrill edited the *Parish News* in 1998 and 1999.

The 'Link'

Wes and Una Trigg edited *St. Luke's Link* for the 2000 to 2003 period. A communications group with Dorothy Ayrton as convenor was set up in 2004. Des Bath edited and coordinated the spring edition of the 2004 *Link* also the 2005 editions. Linda Salamy edited two editions of the *Link* in 2006.

Distribution

For many years a faithful group of ladies folded and labelled the *Parish News* and Jill White attended to the mailing. Currently, with the most modern of printers, the pages are printed and collated, and Des Bath applies the address labels. Copies are then made available for collection by the congregation on two Sundays, and the remainder are posted.

Other Regular Means of Communication

Weekly Notice Sheets: One of the many tasks performed in the church office is setting up the video projector operation for the service each week, and to produce the weekly notice sheets.

Crosslight: Alf Swan is currently responsible for the allocation and distribution (by members of the congregation), of the monthly Victorian and Tasmanian Synod publication *Crosslight*.

With Love To The World: This is a quarterly magazine with daily Bible readings, prayers, questions for discussion groups, and suggested hymns. Contributors collect their copies from the church.

Directory

In 2005, Joan Jackson produced an attractive directory for the benefit of visitors.

Abridged History

Jean Williams has produced an outline history of the church, which is also available to visitors.

Prayer Book

The Communications Ministry Team compiled a *Treasury of Prayers* in 2005. Members of the congregation contributed prayers, poems and scriptures for this book of hope and love.

Letter Box Leaflets

Leaflets are prepared and distributed by volunteers to advertise special functions and services.

Chapter 29

OUTREACH

The members of the Highton congregation and the Sunday School have been involved regularly in fund raising to provide support for missions, children's services, education, health programs and alleviating poverty, both nationally and internationally.

This chapter outlines the broad range of outreach projects commenced and/or supported by members of St. Luke's since the 1960s.

The measure of success of each venture is - how many people have been helped and what impact the project has on their lives.

The men and women involved in outreach take up the challenge by giving their time, money and skills. They are ready to share their compassion, patience and resources to help people out of a crisis situation, out of exclusion, anxiety, poverty and into confidence and independence with dignity and respect.

They are entrepreneurs in the business of hope and service ... They reach out in faith.

We give thanks for the record of outreach and concern for others shown by St. Luke's, particularly in the fields of social justice, mission, youth housing and education. This work will continue to provide the support, action and resources to people who have lost hope, love and faith in God.

Christian Religious Education in Schools

The following is a list of dedicated people from St. Luke's who have taught Christian Religious Education in local

schools - Highton Primary, Bellaire Primary and Montpellier Primary, since the mid 1970s to 2006.

- Dorothy Bentley (taught for 20 years)
- Beth Allen
- Yvonne Campbell
- Judy Clark,
- Carole Findlay
- Rev. George Grimmett
- Mary Grimmett
- Jenny Van Ginkel
- Jenny Green,
- Marion King (taught for 17 years)
- Alison Lyons
- Joy McAvaney,
- Pastor Iain Nixon.
- Annette Packett
- Jenny Patchett
- Dorothy Perkins
- Jenny Pooley
- Rev. Chand Prasad
- Rev. John Robson
- Joyce Robson
- Ilma Redfern
- Anne Salvado,
- Wenda Saxon
- Heather Schwennessen
- Pam Seller (taught for 21 years)
- Rev. Colin Thomson
- Barbara Wootten
- Rev. Ron Yeats

Members of the Council for Christian Religious Education in Schools.

- Jenny Pooley, Area Officer 1990-1995
- Mark Seller, Geelong Auxiliary Chairman 1999-2007
- Pam Seller, Area Officer 1989-1995
- Des Younghusband, Treasurer 1993-2006
- Christmas card coordinators
 - Jean McKibbin
 - Joan Marshman
 - Jenny Pooley
 - Pam Seller.

The Council for Christian Education in Schools is the umbrella fund raising organization for CRE teachers and school chaplains.

In his 2005 chairman's report, Mark Seller stated that '3,800 volunteer CRE teachers, and more than 60 chaplains provide this challenging work in Victorian schools. Six chaplains and approximately 200 CRE teachers work in more than 60 Geelong region primary schools with 12 different denominations represented'. The council prints material for CRE, and organises training days for teachers to become accredited CRE teachers. Trevor Cole, 2006 Appeal Patron, commended all involved in this unique ministry and quoted Acts 20:24 which encourages and inspires the CCES teachers and chaplains: 'But my life is worth nothing unless to use it for doing the work assigned me by the Lord Jesus - the work of telling others the good news about God's wonderful kindness and love'.

After twenty-one years, Pam Seller is now the only teacher from St. Luke's currently teaching at Highton Primary School. A truly remarkable contribution, taking the Christian story to children who otherwise may not have this gift in their lives.

Belmont – Highton Community Aid Abroad

About seventy to eighty members of the Highton Methodist and Presbyterian churches attended a Church and Life Movement meeting promoted by the Australian Council of Churches in 1967. The Belmont-Highton Community Aid Abroad Group was formed at that meeting which was chaired by Rev. Brian Ball of the Highton Presbyterian Church.

A committee was formed with Pat Quinlivan elected president and Mrs Jean Williams the secretary.

This group had the distinction of being one of the first to introduce 'Walks Against Want' into Australia. David Odd, then a teacher at Belmont High School, imported the idea. David had spent a period in Canada and returned with the new fund-raising idea of 'Walks'.



Above: Walk against Want 1969

Above L-R: Trevor Anderson, Milton Cations, Alison McAdam, Catherine Cations, Rev. Brian Ball, Visitor, Jack Cations, Katherine McAdam & Chris Williams



Above: Walk Against Want 1969.

The route for most of the walks was along the banks of the Barwon River, commencing at the Moorabool Street Bridge.

Initially walkers collected their sponsorship forms from local chemist

shops, and returned them together with the money collected to that particular shop in Geelong. Members of the CAA committee collected the money in shoe boxes, counted and banked it, until banks consented to open the CAA account for direct contributions from walkers.

We were stunned by the public support of the first walk, which raised \$11,000 for CAA projects.

In its second year the walk netted \$10,000. Very soon CAA became national, and walks were organized in every state of Australia. Then schools and other organizations staged walks for their own funds and the income for CAA locally was reduced.

However, CAA-Oxfam still organize walks in every state in March, and St. Luke's members have always supported this worthwhile outreach to aid developing countries.

Christian Work Parties

The Highton Methodist Church Work Parties

1964-1965 Griffiths House and St. Philip's College, Alice Springs

Jack Cations led thirteen members of the church who journeyed by car and train to Alice Springs for a Christmas Work Party at the Bush Mothers' Hostel section of Griffiths House Church Centre.

Tasks were to renew all wire screenings; rooms were painted and new curtains provided. Also fencing, gardening and renovations were carried out. Assistance was also provided at St. Philip's College.

1967-1968 Nuisawa School, Taveuni, Fiji

This was a work party lasting five and a half weeks, for thirty people working in tropical conditions. Tasks included

laying water pipes from the spring to the school, (prior to this water had to be carried). Dormitories and classrooms were painted.

Leaders were Ian Hopper, Bill Raynes and David Odd, who were accompanied by their families, together with Ian Allan and seventeen volunteers.

1970-1971 Kabilomo, New Guinea

Tasks were to install a generating plant, wire main buildings for electricity and to build a school at Kabilomo.

Leader - Noel Reed, builder

Group members

- Brian Couper, (teacher)
- Alan Cunningham, (trainee engineer)
- Fale - Papuan girl
- Idris Jones, (market gardener)
- Paul Jones, (apprentice joiner)
- Alwyne Merritt, (teacher)
- Sheila, Mark & Ashley Reed
- Stan (teacher), Alice, Kerrie & Phillip Rogers, (motor mechanic)
- Peter Stonehouse, (teacher)
- Peter Ward, (electrician)

1970-1971 Gaulim, New Guinea

Tasks were to build two residences for staff members of the Gaulim Teachers College and electrical work in the village hospital and at the College.

Leaders

- Ian Allan
- Ian Hopper

Assistant Leader

- David Odd

Group members

- Peter Bedggood
- Sue Butcher
- Eon Cook
- Neil Dendle
- Colin Gray
- Peter Gray
- Helen Johnston

Steadfast Through Change

- Ray King
- Beryl, Daniel and Michael Odd

1971-1972 Kandavu, Fiji

This work party was led by Ian Hopper. His wife Pam relates: "This was our largest venture to date. In all fifty-three people were involved."

The work was at Richmond High School where an entire cement brick dwelling was built for the principal of the school - Master Dau. A generator house was built to house the diesel engine to supply electricity to the compound, and a reticulated water supply and septic tanks were installed.

Before leaving Australia a generator was purchased, repaired and sent over to the island before our arrival.



Above: Work party 1971 to Kandavu, Fiji, Dau's house completed.



Above: Presentation of gifts, Fiji Work Party

All food supplies had to be ordered and delivered to the island prior to our arrival as everything had to be sent from the main island of Fiji. This also meant that our menus had to be finalised well in advance. Once on the island, the women did all the washing, cleaning and prepared the meals. Ten children went on this trip, so one of the women

members was responsible for entertaining the children during the day while the men and other women were working."

1973-1974 Tonga / Fiji

Three separate groups completed large projects.

In Tonga, a complete house was built for the principal, also concreting was carried out on site.

The leader was Ian Hopper, deputy leader/treasurer was Keith Moore, with thirty-one volunteers and eight children, including Pam Hopper and their three children.

The task in Levuka, Fiji was the construction of a head master's house and services.

The leader was G Barnes (accompanied by his wife and three children) with twenty-two volunteers and five children.

Tasks in Taveuni/Kadavu/Ba included the maintenance of machines and equipment installed by previous work parties, and the training of local people in servicing these facilities.

The leader was Stan Rogers assisted by sixteen adults accompanied by six children.

A Leader's Experience

Work Parties demand detailed organization to be successful, with a lead-time of twelve months.

This was the experience of Ian and Pam Hopper who organized the Highton church Work Parties from 1967 to 1974. Advertisements were placed in church newsletters asking for volunteers, and applications were received from all over the state of Victoria. Monthly meetings were held to plan and organize the work to be carried out and for volunteers to meet other team members. Vaccinations needed to be updated regularly. Team members paid for their own fares and meals, and accommodation was provided by the host organization.

The following is an extract from the Belmont Methodist Circuit service of

dedication of the Fiji/Tonga Work Party, 1973.

Statement of Purpose

"We rejoice that you have responded to the call of and the needs of the Church in Fiji and Tonga; that the Board of Missions and the Fiji and Tonga Conferences of the Methodist Church have accepted your offer; and that you are willing, at some personal cost, to give of your time, your holidays and your talent to assist the indigenous churches in Fiji and Tonga.

Let none divert you from your task, but see in this venture the call of God to both share what you have received from Him and to receive what He has to give you from the richness of His grace in the Fijian and Tongan churches.

The Lord bless you and keep you. Amen."

Missionaries From Highton

1971-1972 Ed. and Wilma Pescott worked as missionaries on Elcho Island.

1971 Noel and Sheila Reed and family accepted a call to work on Papua New Guinea and Solomon Islands for the Overseas Mission Board

1972 Ken and Pam Edwards left Highton to work at George Brown High School, Fiji

1972 Ken and Merrilyn Best accepted a teaching post in Nigeria.

1977 Doug and Freddie Weaver and family joined a work party to Oodnadatta (north west of Lake Eyre).

1977 David, Beryl, Michael and Daniel Odd spent some years at Manggai High School, Kavieng, and New Ireland. David eventually became the Principal of the High School.

Steadfast Through Change



Above: Charleville, Queensland Work Party 2006, Pam & Graham Reid right front row. Photo provided courtesy of Pam & Graham Reid.



Left: Pam & Graham Reid in front of the new sign at old AIM School Hospital in Coen 2001. Photo provided courtesy of Pam & Graham Reid.



Above: Restoration work in progress 2005, Hughenden, Queensland, Pam & Graham Reid. Photo provided courtesy of Pam & Graham Reid.



Above: Graham Reid painting at the rear of the Chapel in May 2007. Photo provided courtesy of Pam & Graham Reid.

1988 Tasks were major repairs and painting to the interior of the Casterton Uniting Church, carried out by members of St. Luke's under the guidance of Ian Allan.

Frontier Service Workers

1991 Peter and Elizabeth McKenzie left St. Luke's to become Student Group House Parents at Charleville, and later at Atherton, Queensland. They then spent a period managing a Uniting Church motel in Paramatta.

1996 Doctors Richard and Leanne Grills worked at the Chikinkata Hospital in Zambia.

Frontier Service Work Parties

Graham and Pam Reid, long time members of St. Luke's, joined the following work parties:

2001 Coen, at Cape York in Queensland. There were twenty eight workers in the group. The task was the renovation of the old Australian Inland Mission complex and unit.

2002 Armata in South Australia. There were nineteen workers who took on the task of renovating a recreation building.

2003 Carnarvon, Western Australia. Six workers renovated the 100-year-old church property.

2004 Hughenden, Queensland. Twelve workers renovated the 100-year-old church

2005 Tom Price, Western Australia. Fourteen workers undertook the renovation of the church, manse and hall.

2006 Charleville, Queensland. Eighteen workers renovated the manse, the student group house & the RAFS buildings.

The following are extracts from a booklet entitled *Fiji Travel Mission 1971* written by Gladys Ball and Alice Rogers. These thoughts probably reflect the sentiments of many who have worked in the mission fields.

“The window of life seemed to open onto a new world, filled with the riches of nature and unspoilt by the pollutants of progressive society. Life is enjoyed in the context of its creation, and we possibly looked on with envy as we left those shores to return to the mechanised process of living in our own society. We learnt that earth's greatest treasure lies in human personality, and that faith in God gives meaning and purpose to human life.

What we gave we had; what we received was beyond our wildest dream.

Our reward was great because we learnt how to understand another people, gain their friendship, and join with them in the fellowship of God.”

Social Issues Group

The prime movers of the Social Issues Group for many years have been Dr Rod and his wife Judy Clark.

The following article was contributed by Dr Rod Clark:

“About twenty years ago a group of people at St. Luke's began to meet for the purpose of seeking the relevance of Christianity to the problems of the day. They decided to undertake projects to assist those in need; especially agencies that received little help elsewhere.

Unfortunately few records of these early meetings exist. However, they probably took place about 1986, and went under the title of the Social Justice Group. Jan Hale was the driving force at that stage and recognition of her efforts is long overdue. Other members included Kevin McAvaney, Carole Findlay, Eric Tinney, Gil Rush, Christine Ash and Rod Clark.

Some of the activities included support for Prison Fellowship, Australian Birthright, Justice for the Environment and People, Aboriginal groups, Amnesty International, CAA (now Oxfam) Walk Against Walk, and Save the Children's Fund. With the help of Vince Ross from Narana Creations we conducted memorable 'Koori concerts' at St. Luke's. The members of the group were busy people who took part whenever possible, and much was achieved.

I took over the de facto leadership of the group around 1992 and in the years that followed we arranged discussions, information and fund-raising activities. These aimed to assist such organizations as Christian Blind Mission, Medicines Sans Frontiers and Amnesty International, with continuing support for Oxfam. We also maintained continuing contact with the International Mission. For several years Ian Spencer contributed weekly items to the church news sheet from this body, which also provided speakers for evening meetings and Sunday services.

Around 1997, the Belmont and Highton churches each had a small Social Issues Group. The Highton Group approached the Belmont Group and agreement was made to combine meetings and activities. This continuing arrangement has proved to be highly successful.

Recent initiatives have been to support World Vision; provision of a vaccine refrigerator for PNG; organized 'Winter Warmers' which provides food for needy families through PEX and Concern Welfare. We also organized information evenings on Iraq and on child labour in many countries.

During 2003 to 2007, the group supported projects for clean water through the Australian Red Cross, in addition to medical projects in East

Timor. We have been successful in establishing a clean water supply to several villages; raised \$7,000 for a medical clinic for the poor and supported the Alola Foundation for mothers and babies in East Timor.

The current committee membership includes the following people from St. Lukes.

- Dr Rod Clark and Judy Clark
- Valerie Grills
- Carol Manks
- Christopher McAvaney
- Brian Williams

And from Belmont Uniting Church:

- Rae Pearson
- Lyn Rankin
- Carl Schaller
- Barrie Dickie

Over the years the members have all benefited from the project challenges and the rewarding experiences. Many links with community groups have been established, and the church's role has been recognized and appreciated."

Note: In 2003 the Social Issues Group came under the auspices of the Mission Outreach Ministry Team, but it operates independently under the leadership of Dr Rod Clark. Communication is maintained between the two bodies, and when necessary specific items are referred to the Church Council for information.

Mission Outreach Ministry Team

The following information was contributed by Ken Anderson, Convenor, Mission Outreach Ministry Team 2007.

"The Mission Outreach Ministry Team was one of several St. Luke's Ministry Teams formed in 2003.

This team consists of the convenor, ministerial team member, one or two

other leaders and if possible, four or five members of the congregation approved by the Church Council.

The role of the team is to serve the community by supporting people in their life journey and by providing help and assistance.

The following are the aims of the Mission Outreach Ministry Team.

- Share with the Ministerial Team in proclaiming Christianity to our community
- Develop strategies for outreach into our community
- Promote the cause of social justice
- Promote the examination of community issues considered important from a Christian perspective
- Promote the wider work of the Uniting Church
- Seek to ensure that St. Luke's is represented on the various councils of the wider church."

Goals

The Mission Outreach Ministry Team is working on the following projects.

Deakin Chaplaincy

Following St. Luke's previous involvement with Deakin Chaplaincy, the Mission Outreach Ministry Team instigated the appointment of another chaplain in 2007.

A candidate has been approved by the Synod Settlements Committee and is in the process of obtaining accreditation from the Christian Chaplains in Tertiary Institutes. Upon receiving this accreditation for the 0.5 position, the nominee will be invited by the Vice Chancellor to take up the appointment. The Presbytery in conjunction with St. Luke's will then conduct an appropriate induction.

Continuation of Outreach to Local and to Ethnic Communities

Sewing classes are held fortnightly in the Chapel for migrant Sudanese women. The classes are enjoyed by tutors and students, not only for the achievements in creating garments, but for the interaction between the women and the tutors. The children are cared for by students from the Gordon Institute of Technology as part of their Children's Services course.

Other facilities provided include personal cultural language support; transport to church services; transport from the airport for new arrivals and advocacy and support such as are required for the rental of property. Provision of additional household furniture, clothing and requirements for a comfortable home and moving furniture when a family relocates are other duties carried out. Occasionally, extra activities are needed such as obtaining and cutting firewood for the family occupying the Barrabool Road manse.

We have also taken families with children to the beach, for farm visits, transported children to schools and Doug Jackson has refurbished 25 bikes which have been distributed to families.

Developing a funding proposal to support refugee resettlement

Based on a model prepared by a Melbourne Uniting Church and using the documentation from the NILS (No Interest Loans Scheme), we have devised our own system to provide interest free loans to families who have obtained visas to come to Australia under the relevant conditions governing refugees, but who do not have the resources to purchase the air fares. Upon their arrival they will repay the loan from their Centrelink benefits. Although we have received generous donations to this fund,

this will only provide fares for two families.

Art Exhibition

The Mission Outreach Team has initiated an art exhibition, which is being managed by a committee. The exhibition will be held during Refugee Week in August 2007 at St. Luke's.

The theme of the exhibition is 'Journeys of Hope', and any profits will support St. Luke's ministry to refugee resettlement.

The exhibition is seeking to encourage artists to focus on the journeys that refugees make in fleeing trauma and disadvantage to create a new life in different cultures. The intent is to assist in placing before the community the plight of refugees and some of the issues that they confront in making this transition into a new culture.

Cooking classes for men

The following extract is from *St. Luke's Link* July 2006.

Alison Lyons saw an opportunity for mission outreach by making life happier, healthier and more interesting for some men of the church and the community by teaching them how to cook healthy meals. The initiative came from Ken Anderson when he had been told that "most men have no idea how their meals appear on the table before them". Alison's recipe: Ingredients: 1 willing teacher, 8 willing students, many cups of laughter, buckets of enthusiasm. Method: Bring all the ingredients to St. Luke's kitchen. Mix well. Meet weekly for eight weeks. Result: Much more skilled cooks, full of laughter, enthusiasm and satisfying fellowship.

Congratulations Alison on sharing your skills and providing warm encouragement to your students.

More Challenges

The Mission Outreach Team aims to develop a primary school age youth group: to run a family camp, and to encourage regular worshippers who are currently not members, to consider church membership.

Committee for the Settlement of Asian Refugees in the South Barwon Area

During 1980, several meetings were held in Geelong by the Department of Immigration for the purpose of settling Indo-Chinese refugee families under the 'Direct Into the Community Scheme' outlined in the guidelines published by the department.

On 9 December 1980 an inaugural meeting was called by Edgar Frost to form a Committee for Settlement of Asian Refugees (South Barwon Area). The following people were present.

St. Stephen's Anglican Church

- E Frost
- Rev. M Thomas,

St. Bernard's Catholic Church

- K Butler
- E Morganti

St. Luke's Uniting Church

- D Cameron
- M King
- Dr E Tinney
- Patti Tinney

Alexander Thomson and Barrabool Uniting Churches

- Merle Anderson
- Gwen Ladd
- F R Newbury

The following Interim Executive Committee was formed.

- Edgar Frost (Hon. Treasurer)
- E Morganti (Hon. Secretary)
- F R Newbury (member)

- Dr Eric Tinney (Chairman and official contact with the Department of Immigration)

Note: Joe Gilks was Secretary from February 1981 for two years. A constitution was adopted at a full meeting of the Committee on 7 February 1981 and application was made to the Taxation Department for donations of \$2 and over to be tax deductible.

Families arrived from Asian countries including Vietnam, Cambodia, Laos and Kampuchea via refugee camps in safer countries.

On arrival in Geelong, members of the South Barwon Committee welcomed the families. They were housed and fed, and volunteer car drivers and busses transported to them Adult Migrant English classes at Lunan House, Drumcondra. The following drivers were from St. Luke's.

- Ian Allan
- Annis Ballard
- George Crawford
- Jack Donnan
- Clem Eldridge
- John Grills
- Andrew Reid
- Arch Scott
- Jean Williams

George and Frances Crawford together with Andrew and Ena Reid assisted the Inthavong family, who attended St. Luke's.

Children were placed in schools and parents encouraged to find employment.

The foregoing has been a broad account of the fine work done by members of the South Barwon Committee for Settlement of Asian Refugees, with contributions from many friends and supporters.

The following article is a more personal and human story printed in St. Luke's *Link* in December 2004. Compiled by Eric Tinney and members of the remnant Refugee Settlement Committee for the information of participants and as a tribute to those now deceased.

“FIVE BLOKES, FIVE DOLLARS

This is a modern day story of ‘*five loaves and two fishes*’, when five individuals, each a member of a different Geelong church, committed themselves to provide homes and sustenance for Indo-Chinese families fleeing the slaughter of Pol Pot and communist insurgence in the 1980s.

Dilemmas stemmed from ignorance of Asian culture, our financial insecurity and the risk of tampering with the lives of others. Unemployment and immigration threatened jobs of local workers.

In faith, we opened a bank account with five dollars that had been placed on the meeting table.

“You be treasurer” ... “You the secretary” ... “You convene the meetings for the next three months”. “Let's go home now, and sleep on it”!

The next morning a phone call came from the Department of Immigration, Melbourne - “Could you please take a family of five”?

“Well of course”!

We will have to find a house TODAY!

Then a phone call came from a gentleman well known at St. Bernard's... “I have built a new house in Highton, carpeted and curtained. Would you like to use it for a family, rent free”?

“Well yes, thank you very much”!’

And we had begun an all-consuming mission. We were slow to understand the loneliness and culture shock we had inflicted on our first family, (to the point of temporary separation of the mum and dad). A new home, rent free, lots of room for the veggie garden, a quiet street in Highton - too quiet, sterile you might say! We had begun a steep learning curve, very complex at times, but interesting, always rewarding and sometimes good fun. Our committee members had become good mates, and each contribution was superb as we dealt with the complications of life, day by day.

St. Luke's supported several families by providing household items and toys, also donations were received from the Ladies' Guild, Ladies Evening Fellowship and Youth Club. Money was solicited directly from willing donors until the Government issued an allowance, and then the "loaves and fishes" began to multiply. More people accepted responsibility to care for these new families while others gave food and furnishings, till over forty families were settled in Geelong. In August 1985 two of our earliest arrivals, Phai and Hai were married at St. Luke's, and they became treasured members of the Tinney family.

The harmony and selfless generosity among the workers was exemplary, matched only by the gratitude and loyalty of our newfound friends. Coupled with individuals and groups sharing the same objective across Geelong, we enjoyed a divine spirit of cooperation that touched thousands of lives and which will continue for generations to come.

Thanks be to God."



Above: Samphorn Inthavong & family. One of the many families helped over the years.

The Committee for Settlement of Asian Refugees, South Barwon Area, wound up its affairs by handing \$968.58 of surplus funds on 4 September 2000 to the South Barwon Mission Group, UCA, in accordance with the adopted constitution.

Note: In 2006, members of the refugee families were still in contact with Patti Tinney, Ian Allan and Frances Crawford. Over the past twenty years Eric and Patti Tinney, George and Frances Crawford and Ian Allan have followed the successes and attended the marriages of the refugee children.

Today we find history repeating itself with St. Luke's supporting members of the Sudanese community in Highton and Geelong.

Kardinia Children's Home, Belmont. 1980-1982

Members of the Outreach Committee, together with Vince Ross and volunteers from neighbouring churches rebuilt the administration section of the Children's Home. The main lawn was re-contoured

and planted and a self-contained flat was built as a half-way house for youth preparing to leave Kardinia. The group raised \$12,000 in one year and brought the ABC Gardening Panel, with Kevin Heinz to Geelong, as highlights of four Garden Expos. (Vince Ross and his wife Enid were Cottage Parents at Kardinia for four years).

Patti Tinney recalls, "Australian flavoured dinners held with Vince and Eric playing and singing early Australian folk songs".

Resource Office for the Unemployed & an Ironing Service

The Outreach Committee joined local churches to tackle the problem of unemployment. They canvassed each Council for information and established a Resource Office to aid the unemployed (prior to the Commonwealth Employment Service)

At Anne Fuller's suggestion, they also set up the fund-raising Ironing Service at the Belmont Baptist Church. This operated successfully for several years.

Belmont Drop-In Centre

This centre was an initiative started in March 1986 by volunteers from St. Luke's and the Belmont Uniting Church. Joint coordinators were Gil Rush from Highton and Fay Harper from Belmont. The centre was located in the Regent Street tennis pavilion until 1989. Members of the public were welcome to drop in and enjoy a quick lunch or a cup of tea and a chat.



Above: The Drop-In Centre, 1986
Standing L-R: Clive Champion, Carole Findlay, Joan Jackson, Jean Sinclair, Judy Angus (rear) & Judy Clark
Seated L-R: Gil Rush & Dorothy Last



Above: Photos of ministers and volunteers at the opening of the Drop-In Centre, March 1986
L-R: Rev. John Robson, Dennis Tomlins, Minister of Alexander Thomson Uniting Church, Gil Rush, Rev. Bob Patterson, Rev. Wesley Trigg, Minister at Regent Street Uniting Church

St. Luke's Christian Singles Group

The group was started in February 1987, with Gil Rush as coordinator. Judy Angus was secretary for a period, followed by Heather Whitcombe. The object of the group was to provide friendship and fellowship to those people who for one reason or another found themselves living alone. The belief was that the church could become "a doorway of hope." The Group offered

Steadfast Through Change

care and support to each member and an opportunity to join the church.

Member Dorothy Last recalled that most of the members were younger, and she visited them, encouraged and listened to them, prayed with them and ached for them, especially those with young children. Her vision for the group was for inner healing for their brokenness from a loving Jesus.

St. Luke's minister Rev. Kenneth Ralph supported the group and his skills in this field were highly valued. In 1990 seminars included the following.

- Living with Loss – Rev. Eric Main
- New Beginnings – Rev. Rob Hoskins
- Self Esteem – Jan Cheatley - Life Line
- Budgeting Your Finances - Doug Cameron
- Building a Positive Self Esteem - Rev. Kenneth Ralph

Family Education Commission 1988-1990

A series of programs led by Rev. Kenneth Ralph were held at St. Luke's to affirm and support family life. The sessions were an outreach to the wider community of Geelong and were always very well attended.

Subjects covered included the following.

- Self Esteem for Women
- Understanding Your Preschooler
- Becoming a More Positive Person
- Self Development Course
- Parenting Teenagers
- Making Marriages Work
- Coping with Parents
- Managing Stress
- When Children Leave Home
- Men's Awareness

- AIDS
- Answering Your Children's Questions About Death
- God and Sex
- Violence in the Home/Society
- Building a Better Relationship

The following people were members of the Commission.

- Judy Clark
- Carole Findlay
- Joan Jackson.
- Max & Marion King
- Dorothy Last
- Ros. Leigh
- Joy McAvaney
- Rev. Kenneth Ralph

Barwon Prison Visitation

In 1991, Gil Rush, Eric Tinney and Dorothy Last from St. Luke's, along with Denis Bentley from Grovedale and Mary Bailey from Lara, participated in a training course for visiting prisoners at Barwon Prison. They became Uniting Church Accredited Pastoral Visitors, approved by the State's Office of Corrections.

In 1994, Gil Rush and Mary Bailey were recognised as Lay Chaplains – “with a ministry of voluntary service”.

Gil and Mary saw their role as also offering practical support for prisoners' families, for whom visiting was difficult. In 1993 Gil Rush invited Rev. Chand Prasad to accompany him to speak to a prisoner from Fiji. The conversation was conducted in Hindi, which enabled the prisoner to communicate in a familiar tongue. Dorothy Last and Denis Bentley were constant visitors to the prison for twelve months and Eric Tinney carried on for another year. Dorothy spoke of the difficult but rewarding task of visiting women at the Barwon Prison, and the need for prayer for the prisoners

and their families. Support for the work came from the people of St. Luke's who helped with food and clothing and Christmas presents for prisoners and their families.

Eric Tinney undertook the task of removing prisoner's unwanted tattoos and he commented: "I enjoyed my visits and the prisoner's company. My constant concern is to introduce new ideas and thoughts beyond the sameness that is their lot in confinement. How can we help the prisoners throw off thought patterns that breed self-destruction and hate? Of course, I pass off the responsibility in prayer".

In May 2006 Gil Rush was presented with a wall clock by the Prison authorities to mark 15 years of service. He recently wrote about his prison ministry, "The prison visitation has taken over most of my life, dealing with families and listening to prisoners, both in prison and on the telephone".

This has been a story of compassion, and about being non-judgmental of the prisoners, whilst at the same time, offering Christian friendship, hope and encouragement. Perhaps these dedicated visitors were following the example set by John Wesley in 1739 when he read prayers every morning to the prisoners at Newgate Prison, Bristol.

Belmont Market Book Stall

The Christian Book Stall was a pilot project for a limited time, set up at the Belmont Sunday Market early in 1990 by a small representative group from the churches of Belmont and Highton. Eric and Patti Tinney represented St. Luke's with support from the elders. The purpose of the stall was to provide a Christian presence and afford a focal point where people could gather, share a

cuppa and discuss matters of interest and concern.

The stall consisted of a trailer with canvas cover and sides to protect the books. The stock was donated and included paper-backed books, new and used, including bibles, pencils and rubbers.

Mall Outreach 1990-1992

The following article was contributed courtesy of mall volunteers, Brian and Jean Williams.

"Eric Tinney and several other members of St. Luke's congregation answered the call for volunteers to "support the work of responding to God's call to show love to the cold, the homeless and the hungry."

This was the vision of Paul Graham, convener of Mall Outreach in Geelong. The following is Paul's description of the work. "We see our task is to get alongside these outcasts and to listen and not criticise, to love the person though hating any sin. To accept and not condemn in the same way as our Lord has accepted and forgiven us. We do not give advice but refer people to expert help and assistance, and to do our best to provide for their immediate needs".

Every night of the week volunteers towed a converted caravan from Christ Church in Moorabool Street down to the Mall in Little Malop Street. For a very small sum the volunteers served hot tea and coffee, soup, sandwiches, toast and other hot food. Several of the local bakeries generously delivered unsold bread and cakes to the caravan for distribution to those in need.

Some people became regular visitors to the caravan and many sad life stories were shared with the volunteers. When a

person is alone and "home" is a small room at the back of a pub, the caravan became their lounge room, providing company, warmth, food and friendship. In time, the Geelong City Council replaced the caravan with a multi-purpose building, which was later removed. Unfortunately for the poor, lost and needy of Geelong, there is no current outreach of this nature in the Mall.

Deakin Outreach 1992-1995

Rev. Chand Prasad was appointed as a Chaplain to Deakin University from the commencement of the academic year in 1992. She was released from St. Luke's to work one day a week at Deakin with students and staff. Chand developed a special role working with overseas students, and also encouraged St. Luke's families to host Deakin students.



Above: Rev. Chand Prasad

The Chaplain's program consisted of meeting with students referred by the

Students' Counsellors, a regular "Time Out for Prayer", and morning teas with staff members from different faculties.

Chand also visited several students when on her overseas trips to Malaysia.

Only the students at Deakin know just how much Chand, with her multi-cultural background has smoothed their paths and increased their understanding of our culture. This parish outreach to Deakin students was waiting in the wings till Chand arrived, and we are grateful that a system of cooperation was established among the local churches to enable this work to continue for a further period.

Youth Housing - The Youth Housing Committee

The following article was contributed by courtesy of Judy Clark and members of the Youth Housing Committee.

Members of the St. Luke's congregation saw a need to provide low rental accommodation for young people in the South Barwon area, and at a weekend goal setting meeting held at Deakin University in October 1987, elected to support students between the ages of sixteen and twenty one who were unable to live at home.

This coincided with the Rotary Club of Highton-Kardinia's identification of a similar need to support students in tertiary education with medium to long-term housing. Some years later, the result of combining the efforts of St. Luke's and Rotary with the support of the Foundation for Homeless Youth, led to the State Office of Housing financing a further development.

In the meantime, the Youth Housing Committee (YHC), after having investigated options, in 1989 applied to act as a management group for a

Ministry of Housing residential unit. Fund raising events took place to raise money for equipping a unit, money being sought from activities as diverse as barbeques and the sale of music tapes made by St. Luke's choir and singers.

It was during September 1990 that the Ministry allocated management of a two-bedroom unit to the YHC. By March 1991, a Grovedale unit was ready, and the committee set about canvassing the congregation for furniture and domestic items to ensure that the unit was ready to receive its first two female students.

The Barwon Youth and Accommodation Service (BYAS), support organization and adviser to the YHC, selected two girls who became the original tenants at the end of May 1991. At the dedication in June, Rev. Colin Thomson paid tribute to the research, planning and labour of the committee, which had also to provide the organization for the continued oversight of a range of activities such as providing pastoral care and the sometimes onerous task of cleaning up at the conclusion of an unsatisfactory tenancy. Expansion of the program occurred with the allocation of a second unit, located in Belmont, in September 1992. On this occasion a grant of \$3,500 from the government permitted the purchase of household necessities.

Members of the Youth Housing Committee in 1999 were Ian Allan, president, Judy Clark, Marlyn Gilbert, Noel Patchett, Jenny Patchett and Barbara Patterson.

Having provided a high standard of care and encouragement to occupants of the units for several years, the opportunity arose to accept an invitation to join with the Rotary Club of Highton-Kardinia mid 2002 to house four young people with a 'leader' tenant, undertaking the duty of assuming day to day responsibility. With

the government providing the land, Rotary set out to raise \$45,000, and using the donated skills of trades people, built a rooming house on a site giving good access to all community facilities.

On joining this initiative, management of the two units was relinquished.

The work of the committee succeeded in its original aim to administer the project in a way that protected the rights and the dignity of the tenants, recognizing their capabilities to care for themselves and ensuring that the requirements of the Church and of the Ministry of Housing were met.

Committee members as at 2007 are: Ian Allan, Marlyn Gilbert, Judy Clark and John Watts (Rotary).

While it is impossible to quantify the results of this program, informal meetings with prior tenants have revealed a deep appreciation of the support given so generously.

Recognition is made of the work of committee members of the past, the Rotary Club of Highton/Kardinia, the Foundation for Homeless Youth, Barwon Youth Accommodation Service, Ministry of Housing and the congregation of St. Luke's.

"A fence at the top of the cliff is better than an ambulance at the bottom."

Bushikori Orphan Project

Thanks to Carlene Gill for the contribution of this article, and for the commitment by Peter and Carlene Gill to make sure the honey is available each week.

"The Bushikori Christian Centre is located in rural country near Mbale, Uganda, East Africa.

The property consists mainly of a medical and maternity clinic, a small hospital, the Joshua Primary School and administration offices. The Centre is not an orphanage.

The committed staff at Bushikori provide a much needed service to an impoverished farming community, particularly the vulnerable children who have been orphaned largely through the HIV/AIDS epidemic. The main source of financial help comes from the Australian Support Committee, a non-denominational group based in Geelong, Victoria. The Committee's involvement began in 1994 when the founder of the Bushikori Christian Centre, Pastor Sam Wandendeya came to Geelong and many people were touched by Pastor Sam's commitment to care for the orphans, widows and vulnerable people in his area.

A committee with Mrs Margery Hobbs as president was formed in Geelong and people volunteered their time to work for this cause.

One way of fund raising is by the sale of locally produced Edmonds honey with a percentage of each sale going into the funds. St. Luke's involvement began in 1994 when Mrs Mary Jones, a member of St. Luke's, accepted the task of setting up a weekly stall in the church foyer each Sunday to sell the honey. Carlene and Peter Gill have continued this project from October 2000. The proceeds have grown over the years. In 2006 the sum of \$458.00 was raised for this very worthy charity."





Above: Australiana Night, 29 June 1985

Back Row L-R: Julie Eldridge, Bev Tonkin, Ena Reid, Gwen Williams, Jenny Green, Judy Nason, Barbara Cox, Mary Shepherd, Dorothy Last, Beth Allen, Jean Sinclair.

Front Row L-R: George Crawford, Andrew Reid, Bob Patterson, Rod White, Don Slater, Alf Swan, Peter Webb & Joy Hicks

Chapter 30

SPECIAL EVENTS AND CELEBRATIONS

Fund Raising Dinners, Concerts & Musical Evenings

St. Luke's has been fortunate to have people of greatly diverse abilities and talents, and the list below sets out the celebrations and entertainment provided by members of the congregation and visiting artists from 1974 to 2006.

1974 Gay 90s

A programme of fine food and entertainment

1975 Johnny & Col's Speakeasy

A programme of 20s style razzamatazz entertainment and superb food

1977 Asian Night

Dinner and entertainment at the Sitar Restaurant in Belmont by courtesy of Joyce & Des MacRobbie.

1978 Alf's Army

A nostalgic evening of 40s songs, humor and army style grub!

1979 In Highton Tonight

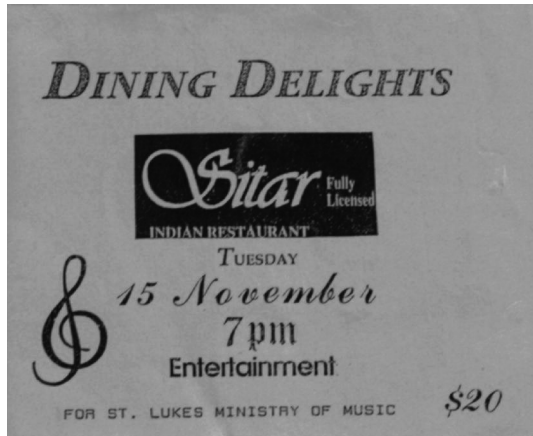
Featuring Comedian Alan Rowe and local talent with a three course meal.

1983 Old Time Music Hall

Three course meal with entertainment, sketches and vocals

1984 Aboriginal Night

Featuring the Wathaurong tribe in St. Luke's hall



Above: Dining Delights, 1980s

1984 Youth Concert

Arranged by Carlene and Peter Gill

1985 Australiana Show and Dinner

Soup and Damper. Dress: Old Aussie style.

1985 Parish Concert

Skits, singing and dancing in St. Luke's Hall

1985 Labasa Combined Choir

Performance by the choir singing hymns from the Fijian Methodist Hymn book

1985 Famine Night

Survival Meal in St. Luke's Hall

1986 The Music Machine

Gospel Music with young people in the church

1987 The Good Old Days

With George Crawford

1987 Hawaiian Night

Held in February



Above: The Music Machine, 1986

1988 Oriental Night

Nine course meal in St. Luke's hall

1991 The Mill Girl and Barber Shop Quartet

Dinner and show in the hall

1993 Christmas in July

An evening of fine food and entertainment

1993 Show Stoppers

A gala night of favorite songs with orchestra and soloists .

1996 Bold as Brass

A musical evening – dinner and show

1999 Images of Faith Art Show

A fund raiser held in the hall)

2002 The Case of the Missing Dead Guy

A play to raise local NCYC finance. The play ran for 3 nights, featuring young and older actors.

2004 Ron Sudden Concert Party

held to raise funds for outreach.

2004 Castle Heart

Musical play with local church talent.

2006 Sweethearts of Swing



Above: Preparing Food for a Hangi, L-R; Jean Williams, Judy Nason, Judy Clarke, Marion King, Helen Swan and Jenny Patchett



Above L-R: Mary Shepherd, Elizabeth McKenzie, Judy Nason and Alf Swan as compare.



Above: Christmas in July, 1993

L-R: Jean Williams, Joan and Wes Marshman, Ian Pooley and Jennie Green



Above: The cast of the Case of the Missing Dead Guy, May 2002

Steadfast Through Change

Parish Fairs & Expos



*Above: St Lukes Fair Buskers 1990
L-R: Keith & Mary Shepherd, Alf Swan,
Elizabeth McKenzie and Ken Allen*



*Above: Display at the Pentecost Expo,
May 1993*



*Above: The Performing Police at St
Luke's Fair March 2002
L-R: Brian Fielder, Wes Marshman, Alf
Swan, Malcolm Marquardt & Brian
Williams.*



*Above: Book stall at the Carnival &
Expo, 3 November 2006
L-R: Bob Tantau, Wes Trigg, Les
Perkins, Brian Williams, Margaret
Hunter, Ian Hunter and Bob McClelland*



*Above: Church fair, November 2005
L-R: Joan Smith, Nancye Wurn and
Dawn Fielder*



*Above: Barbecue stall at the Carnival &
Expo. 3 November 2006
L-R: Pam Reid, Carole Findlay, Alison
Lyons, Neil Reid, Unknown, Graham
Reid, Joan Marshman and friend*

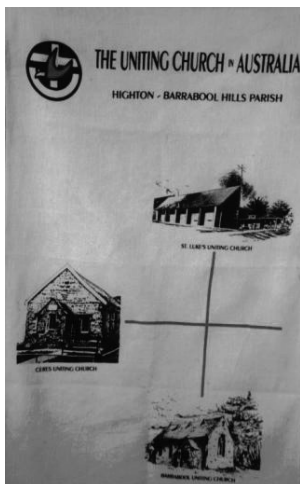
Steadfast Through Change



*Above: Parish Fair, March 1999
L-R: Trudy Johnson, Dorothy Perkins & Jessie Adams at the craft stall.*



Above: One of the displays at the Doll & Craft Fair, 13 September 2003



Left: Tea towels were produced in 1980, showing the three churches in the Highton Barrabool Hills Parish.

Special Celebrations

St. Luke's is fortunate to have so many talented people who can develop a concept into a very special occasion. The ministers have also contributed their

creativity, encouragement and support to provide many highlights and great memories.

We have selected some photos of special services and celebrations over the years.

200 Years of Sunday School in Australia, 1980

A highlight of 1980 was the celebration of 200 years of Sunday school in Australia from 1780 to 1980. Teachers and children dressed in period costumes and enjoyed story time and action songs.



Above three photos: 200 Years of Sunday School in Australia, 1980

130 Years of Sunday School, 1986



Above: Photo of group celebrating 130 years of S.S. in 1986 - 86 children 14 teachers.

Back Row L-R: Paul Seller, Mark Saxon, Kim McMillan, Deborah Ballard, Angela Pooley, Michelle Findlay, Meredith Labrum, Andrew Ellerton, Cameron Baird, Malcolm Baird, James Robbins, Shane Gill, Andrew Ballard, Bradley Seller, Gavin King and David Ellerton (Superintendent)

Second Row From the Back L-R: Bob Skewes. Earl Medlyn & Peter Gill (teachers), Andrew Pooley, Michelle Turrill, Miranda Cox, Nerida Gill, Katrina Main, Naomi Labrum, Katie Green, Campbell Williams, Derek Ellerton, Alison Nankervis, Paul Hosie, Cathy Fisher with Barbara Cox and Jenny Pooley (teachers)

Thrid Row From the Back L-R: Marion King, Carlene Gill & Pam Seller (teachers) Tim Nicholls, Scott van Ginkel, Caroline Gill, Cynthia Mahoney, Michelle Angus, Katrina Hosie, Andrea Skewes, Vanessa Iddles, Campbell Main, Adam Thompson, Ryan Gill, Raelee Anderson (visitor) with Lyn Lang, Elsa Zimmer & Barbara Patterson (teachers)

Thrid Row From the Front L-R: Michael Cox, Bryon Grills, Jo-anne Dawson, Jennifer Cox, Narelle King, Jodi Nankervis, Bronwyn Green, Frazer Gill, Nicholas McAvaney, Alice Williams, Belinda Dawson, Ben McGibbon, Cameron Peterson, Tim Anderson, Aaron Reiter and Chris Hosie

Second Row From the Front L-R: Roddy MacRae, Haley Gill, Tim Barton, Alison Barton, Melita King, Gordon MacRae, Lisa Rooney, Tamara Rantall, Anna McGibbon, Jessica McGibbon, Laurie Dawson, Chantelle Reiter, Christine Twentyman, Chelsea Nankervis, Tiffany Cox, Narelle Thompson, Sarah Cox, Alison Main and Alison Nicholls

Front Row L-R: Warrick Gorman, Jane Podvinsek, Kristan Ellerton, Madilyn Gorman, Daniel Rowan, Ross Williams, Timothy Peterson, Stuart McKenzie, Jean McLachlan, Fiona McKenzie, Matthew Podvinsek, Deborah van Ginkel and Katherine McAvaney

**St. Luke's 120th Church Anniversary,
6 November 1988**



Above: Rev. Kenneth Ralph, his wife Alison and son Jonathan arriving at St Luke's 120th Anniversary



Above: Rev Kenneth Ralph at 120th Anniversary. Rev. A. Hilliard, part time minister, in background

The following article dated 7 November 1988 is reprinted with the permission of the *Geelong Advertiser*.

**"Anniversary Celebrated in Costume
at St. Luke's**

More than 400 people celebrated 120 years of worship at St. Luke's Uniting Church in Highton yesterday morning. About half of the past and present members of the congregation dressed in period costume for the anniversary church services, entertainment and lunch.

Church minister, the Reverend Kenneth Ralph, and his family arrived in a horse drawn carriage. Six vintage cars and a penny farthing bike added to the historic atmosphere.

Entertainment included bush dance performances by 30 Sunday school pupils, music and a display of historic records.

St. Luke's Chapel was built on the corner of Scenic and Barrabool Roads in 1868, but was almost demolished by a freak windstorm 60 years later. The chapel was rebuilt on the same site in 1927 with sandstone from the McCann Quarry at Ceres. A larger church was built beside the chapel in 1983. Most services are held in the new church, but a restoration fund for the chapel was launched yesterday to bring the building back to its former glory."



Above: The 150th Sunday School Anniversary, 2006

Steadfast Through Change



Above and Below: 150th Sunday School Anniversary, 2006





Above: Mr Robert Lane's desk at the 150th Sunday school anniversary in 2006

Special Services



Above: Confirmation Class 1973, with Rev. Arthur Richardson (left) and Rev. Ron Yeats



Above: Kate & Bruce Meade's wedding at St. Luke's 1 October 2006.



Above: Rev, Rachel Franklin baptising Charlie Jane Arblaster, daughter of Catherine and Julian Arblaster, 27 March 2005



Left: Harvest Thanksgiving 9 March 1997, Rev. George Grimmert and Narelle King

Steadfast Through Change



Above & Below: The Palm Sunday Procession, April 1993



Chapter 31

SPORTING CLUBS

Highton Methodist - St. Luke's Badminton Club

Unfortunately most of the records of the Highton Badminton Club have been lost. We are indebted to Wes and Joan Marshman for supplying the following information:

“After the hall was built in 1965 the Highton Methodist Badminton Club was formed by a small group of enthusiastic players.

Graeme Williams, Ray Watson, Jock Hay and Audrey Hill captained four teams entered in the Geelong Badminton Association.

Matches were played in the church hall, with nets and equipment stored in the store room.

The club grew to 40 players in 1967, when the ladies' mid-week daytime competition began. All competitions, both daytime and evening, were played in various halls throughout Geelong and district. Because these halls had not been designed for badminton, many problems arose due to their unsuitable dimensions. In the case of the Methodist hall there was also a problem with sun glare on sunny days. The badminton club provided funds to have Holland blinds fitted to the high level windows on the west side of the building.

Office bearers in 1970:

- Rev. R Yeats (President)
- Wes Marshman (Chairman)
- Maurie Redfern (Secretary)
- Joan Marshman (Treasurer)

Other committee members were:

- E Smith
- N Davey

- J Rooke
- F Dyson
- B Biggs

There were 32 adults and 40 juniors playing in a record number of five evening competition teams and six ladies afternoon competition teams. Coaching classes were held for junior players.

Club members attended a combined sportsman's evening service conducted by Rev. Ron Yeats in 1970.

The Geelong Badminton Association saw the need to have a hall specifically designed for badminton, so when the Corio Leisure Centre was built there was an area designated for badminton courts. This centre opened in 1975 and from then all competitions were played there. This was when the St. Luke's club lost its individual identity as players from all clubs were pooled and were graded according to their ability.

Highton players continued to use the St. Luke's hall for practice and social badminton until the mid 1980s.”

Cricket Club

The following article was contributed by courtesy of Ian Pooley.

“The Geelong Churches' Cricket Association records show that the Highton Wesleyan church entered A section and under 19 section teams in the 1923-1924 season.

The Highton Presbyterian Cricket Club was formed in 1960, the leaders being Ian MacDonald, Rod MacKenzie and Doug Weaver. One team was entered in the Geelong Protestant Churches' Association B Section with Rod MacKenzie as Captain and Doug Weaver as Vice Captain. The team shared the joint premiership in 1964-1965. The

Steadfast Through Change

team also won the 1971-1972 C grade premiership with Frank Currie as Captain and Ces. Glasson as Vice Captain.

Norman McDonald was the driving force and supporter of the Highton Methodist Cricket team. His words were "all good Methodist Churches have cricket teams and we should have one". He backed up his words by supplying all the equipment necessary for the team.

A Highton Methodist team was formed in August 1962, and was entered into the D section of the Geelong Protestant Churches' Association for the year 1962-1963 with Ed. Pescott as Captain and Ron Alexander as Vice Captain. The team won the premiership in its first year.

In following years junior teams were entered in the under 15/16 and under 13 sections, coached by Les Perkins. The senior team went on to win B Section premierships in 1965-1966 with A. Breuer as Captain and Ed Pescott as Vice Captain and in 1971-1972 with John Rooke as Captain and Doug Cameron as Vice Captain.

In 1973 it was decided to form a Parish Cricket Club (combined Methodist and Presbyterian players), which was named 'St. Luke's Uniting Cricket Club', and to field two senior teams and several under-age teams in the 1973-1974 season. Jack Cations was elected Vice President and Bruce Iddles as Secretary:

At one stage the club had three senior teams, one under 16 team, two under 14 teams and two under 12 teams, the largest representation of any club in the history of the competition.

The club (Methodist, Presbyterian and combined) managed to win 20 premierships over the years. A notable achievement of the A grade team was

winning 4 successive premierships from 1976-1977 to 1979-1980 and being runners up in 1975-1976

The premierships were as follows.

'A' grade

1976-1977, 1977-1978, 1978-1979, 1979-1980, 199-1993

'B' grade

1965-1966, 1971-1972, 1991-1992, 1994-1995

'C' grade

1964-1965 (joint), 1971-1972

'D' grade

1962-1963.

U16

1982-1983, 1983-1984, 1987-1988

U14

1988-1989

U12A

1979-1980, 1980-1981, 1985-1986, 1987-1988

In 1992 the club merged with the Grovedale Baptist Cricket club and renamed itself Highton – Grovedale Cricket Club.

The club was disbanded in the late 1990's when the Geelong Churches competition was discontinued due to insufficient teams entering the competition.

In 1977 the club was awarded a plaque (which is on display in the foyer of the church). See following page for photo and inscription.

Steadfast Through Change



Above: Highton Methodist Cricket Club "D" Section Premiers 1962-63

Back Row L-R: L Perkins, L Barclay, J Cations, N Smith, J Leader, K Best

Middle Row L-R: K Miles, E Pescott (Captain), Rev. M S Box (President), R Alexander (Vice Captain), H Best

Front Row L-R: A Price, F Fordham, L Schultz



Above: Highton Methodist Cricket Club "B" Section Premiers, 1971-72 season

Back L-R: H Baum, G McDonald, D Cameron (Vice Captain), M Marquardt, G Nelson, R Bond, F Rice

Front L-R: R Fraser, G Fraser, Rev. R Yeats (President), J Rooke (Captain), J Cations (Vice President), D Finn, B Iddles

Absent: M Brown

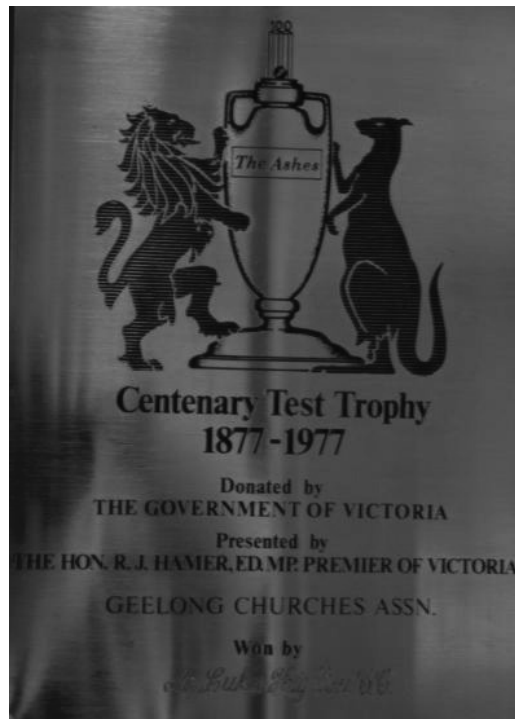


Above: Highton Methodist Cricket Club "B" Grade Premiers 1965-66 Season

Back L-R: L Perkins, J Cations, O Frigerio, J Rooke, G Dawson, D Breuer, R Molyneux

Middle Row L-R: L Schultz (Treasurer), E Pescott (Vice Captain), N. McDonald (Vice President), Rev. S Box (President)

Bottom Row L-R: J Leader, W Brebner, R Perkins, R Alexander



Above: The plaque awarded to the club in 1977 (which is on display in the foyer of the church) with the following inscription.

Centenary Test Trophy

1877 – 1977

Donated by

THE GOVERNMENT OF VICTORIA

Presented by

THE HON. R.J. HAMER ED., MP.

PREMIER OF VICTORIA

GEELONG CHURCHES ASSN

Won by

St Luke's Highton C. C.

Highton Methodist - St. Luke's Tennis Club

The inaugural meeting of the Highton Methodist Tennis Club was held on 23 April 1963. As it was customary for the minister of the day to preside at church sporting club meetings, Rev. Steve Box was elected president, and Mrs June Strahle Secretary-Treasurer."

Club meetings usually commenced with prayer, and for many years the Tennis Club held an annual service in the church.

Members played on the Belmont Methodist Church courts for the first season, then Mr and Mrs Leigh's lawn court in Mt. Pleasant Road until the President of South Barwon Shire, Councillor Hunt, officially opened the Highton courts on 5 February 1966. By this time junior and mid-week ladies' teams had been formed.

Ken Gear built the small pavilion located on the west side of the courts under contract in 1969.

Members used the kitchen at the rear of the chapel vestries for afternoon tea, and for the display of club photos. Club members renovated the kitchen in 1978-1979.

Mrs Audrey Hill was made the first Life Member of the club in August 1969. Audrey gave outstanding service to the club in the capacity of secretary, as a regular player, and for her work with, and encouragement of the junior members.

By 1967-1968 the club had a membership of 118, and in that summer season entered 16 teams in the Churches Association. A report by long-time club secretary Wynsome Penn appeared in the Highton Barrabool Parish magazine dated December 1972 and stated the following.

"The Tennis Club has grown in numbers and strength. We now have approximately 58 Senior and 75 junior members, most of whom are playing Pennant Tennis. This season we have 5 senior, 5 midweek and 8 junior teams. To enable these teams to compete each week it has been necessary to hire other courts, which we have been fortunate to obtain. For a Social Membership of \$2, members may spend a pleasant Sunday afternoon playing on the courts."

Name Change

Following the establishment of the Highton Methodist-Presbyterian Cooperating Parish, both church sporting bodies adopted the name of St. Luke's. The Methodist Tennis Club became St. Luke's Highton Tennis Club in 1976. The name changed again in 1977 to St. Luke's Highton Uniting Church Tennis Club when the Uniting Church in Australia was inaugurated.

By 1977-1978 the club had 153 members with 8 teams in each competition.

New Club Rooms

In 1984, permission was given for the tennis club to use the Lane Memorial Hall for their club rooms. Members of the club carried out renovations in 1985.

Steadfast Through Change

A timber deck was built on the east side of the building overlooking the courts; new glass windows and sliding doors installed on the east wall; the electricity supply and distribution within the hall was up-graded.



Above: The Lane Memorial Hall with the tennis courts in the background, 2006.



Above: The Lane Memorial Hall repainted in 2007 (east side).

Numbers Decline

In the 1988 winter season, 2 senior, 4 junior and 4 mid-week teams were all that could be mustered. In the *Spring Link* of 2004, Wynsome Penn wrote: "The tennis club membership started to decline when the Wandana Heights courts opened in the 1980s. By the end of the 1990s, midweek ladies tennis was all that the Club could support. We are now struggling to keep the midweek teams going, and other clubs are hiring our courts on Saturday."

It is satisfying to see over 100 photos of past senior and junior winning premiership teams displayed on the walls

of the Tennis Club centre. Great credit goes to the experienced players who spent time and energy teaching the junior players who then went on to become winning senior players for St. Luke's.

Wynsome Penn had been a member of the club since 1965 and was president until her untimely death in August 2006. The secretary is Maureen Mikelsons.



Above: Highton Methodist Tennis Club 'C1' Grade Champions, Season 1971

Standing L-R: R King, I Frigerio, A Frigerio & C Williams (Captain)

Seated L-R: Miss E Wells, Miss A Smith & Miss G Smith



Above: St. Luke's Tennis Club 'B1' Grade Premiers, Season 1976-1977

Standing L-R: A Wall, R Hamill (Captain.), R Griffiths, L Leigh

Seated L-R: Miss C Tippet, Mrs J Currie & Mrs M Outridge



Above: Some of the 100 photos of the winning tennis teams taken over the years



Above: Section 4 Midweek Premiers 2002

Back Row L-R: Wynsome Penn, Helen Penning & Barbara Tippet

Front Row L-R: Georgette Ford & Fay Haywood

Bowling Team

From 2003, St. Luke's Church has entered a mixed team to play in the yearly Uniting Churches of Geelong bowling afternoon at Clifton Springs. Proceeds of the afternoons play go to Concern, which is a Uniting Church Welfare Agency in Geelong. In 2006, St. Luke's team won the tournament and had their achievement recorded on the perpetual shield, as follows.



Above: The bowling plaque

Uniting Churches Geelong Mixed Bowls
Championships 2006
St. Luke's Church, Highton
FAYE IDDLES
MAURIE REDFERN
ILMA REDFERN
JOY HICKS

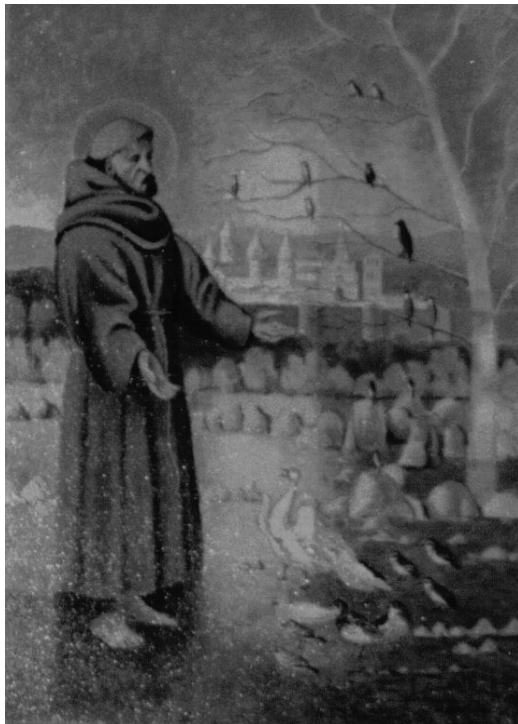
Chapter 32

VISUAL ARTS IN THE CHURCH

The following is a description of items and works of art presented to the church by various groups and artists between 1983 to 2005.

Paintings

In 2004, Geelong artist Robert Tantau donated a framed painting of St. Francis of Assisi preaching to the birds. The painting is a feature of the prayer corner in the Church.



Above: The Painting of St. Francis by Mr. Robert Tantau



Above: The painting by David Williams

There is also a watercolour of St. Luke's Church, by artist David Williams, who is a member of the Glen Waverley Uniting Church congregation. This can be seen in the foyer on the left hand side of the church entry.

Memorial Painting

In 1986 Shirley Strickland presented the church with a large painting of a setting sun in memory of her son Greg, who passed away in 1980. It hangs on the mezzanine level of the church and is inscribed as follows.



In Memory of
Gregory Wayne Strickland
1959-1980

Above: The painting donated in memory of Gregory Wayne Strickland.

Banners

Advent, Christmas and Epiphany Banners

The idea of Advent banners was the inspiration of Rev. Wesley Trigg. In 2000-2001, Mrs Hilary Clarke, art teacher and textile artist, consented to design six banners for the Advent, Christmas and Epiphany period for St. Luke's. Hilary designed all the shapes and suggested suitable fabrics for the banners, which are placed on either side of the large cross on the west wall of the church.

For the working patterns Hilary's original drawings needed to be enlarged twelve times, and Christopher McAvaney, using his computer skills, produced hundreds of A4 pages all carefully arranged in correct sequence. From these Ken Saxon assembled the enlarged drawings from which the working patterns were made. The largest drawing was approximately 3.2 metres high and 90 cm wide.

Lorraine Phelan agreed to be the coordinator of the project. Glenda Murrant who has experience in various craft activities joined her. Lorraine and Glenda chose all the fabrics and cut out the shapes and arranged them on the backing material for the six banners.

These ladies generously gave a recorded 296 hours of work to prepare the shapes required and ironed them onto the huge lengths of backing material.

Lorraine's father, Angus Wyllie designed and built a large quilting frame, enabling up to six people to work together at the one time.

The next step was to stitch on the black bias binding to firmly secure all the component parts and to create a stained

glass effect. The following ladies contributed to this phase of the construction.

- Mary Baird
- Judy Boehm
- Carlene Gill
- Linda Salamy
- Una Trigg
- Dorothy Turrill
- Jill White
- Maurine Wrigley
- Nancye Wurm

At Advent, two wooden strips with large press-studs at appropriate intervals are attached to the west wall of the church. Matching press-studs are fixed on the six banners. Thanks are due to Ken and Wenda Saxon for this concept and to Phil. Phelan for attaching the appropriate banner during Advent, Christmas Day and on Epiphany Sunday.

The banners are covered with protective fabric and are draped over 250mm diameter cylinders constructed by Ian Allan.

A booklet has been prepared describing this work and showing each banner in colour.



Above: The Advent Banner. Note the Communion tablecloth mentioned later in this chapter

Christmas Banner

In 1983 Jenny Van Ginkel designed our Christmas banner depicting Joseph and Mary watching over baby Jesus in a cradle.



Above: The Christmas Banner

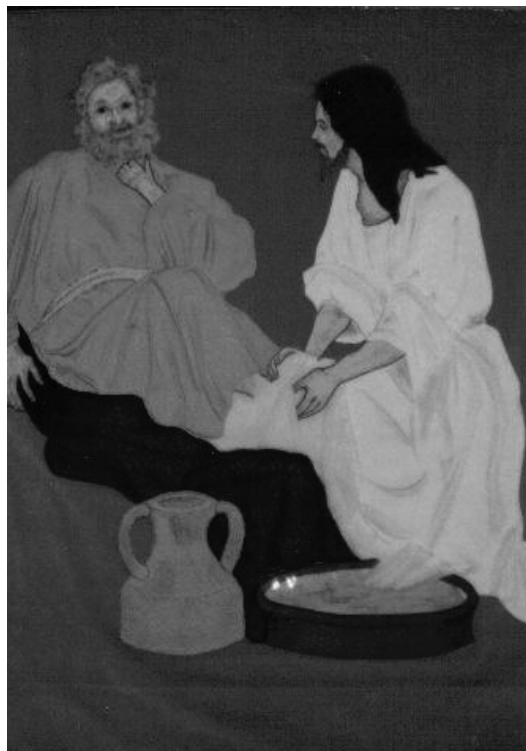
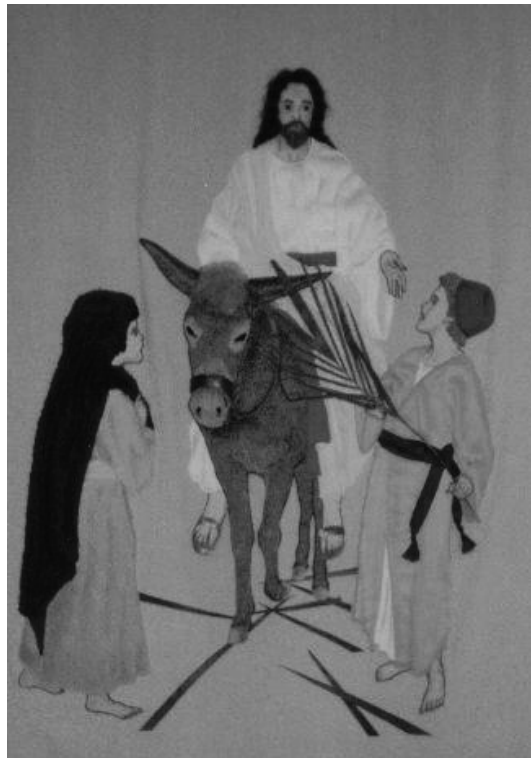
Easter Banners

Six individual banners were designed by Jenny Van Ginkel in consultation with the Rev. Bob Patterson, and presented to mark Easter week services on 24 March 1985.

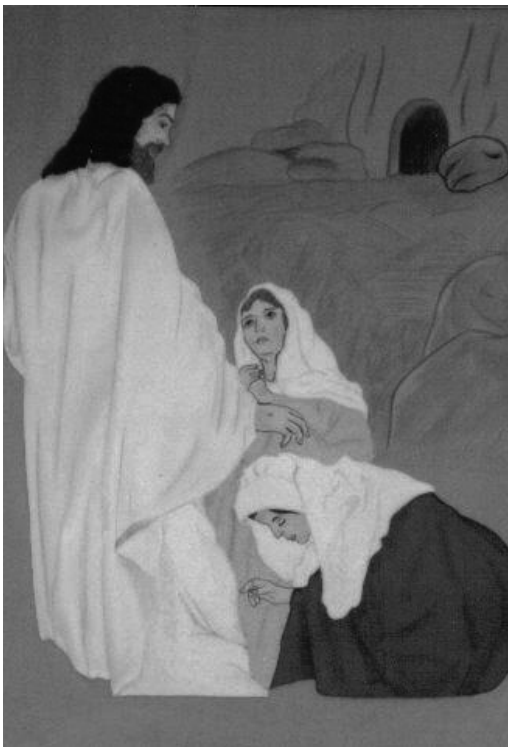
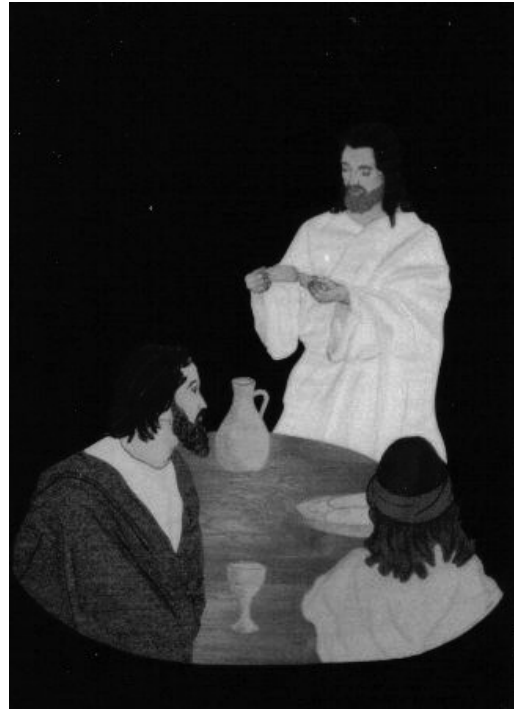
The banners depict the following scenes.

- Jesus entering Jerusalem - Palm Sunday
- Jesus washes the disciples' feet
- Jesus prays in the Garden of Gethsemene
- The women at the tomb
- On the road to Emmaus.

- By the lakeside.



Steadfast Through Change



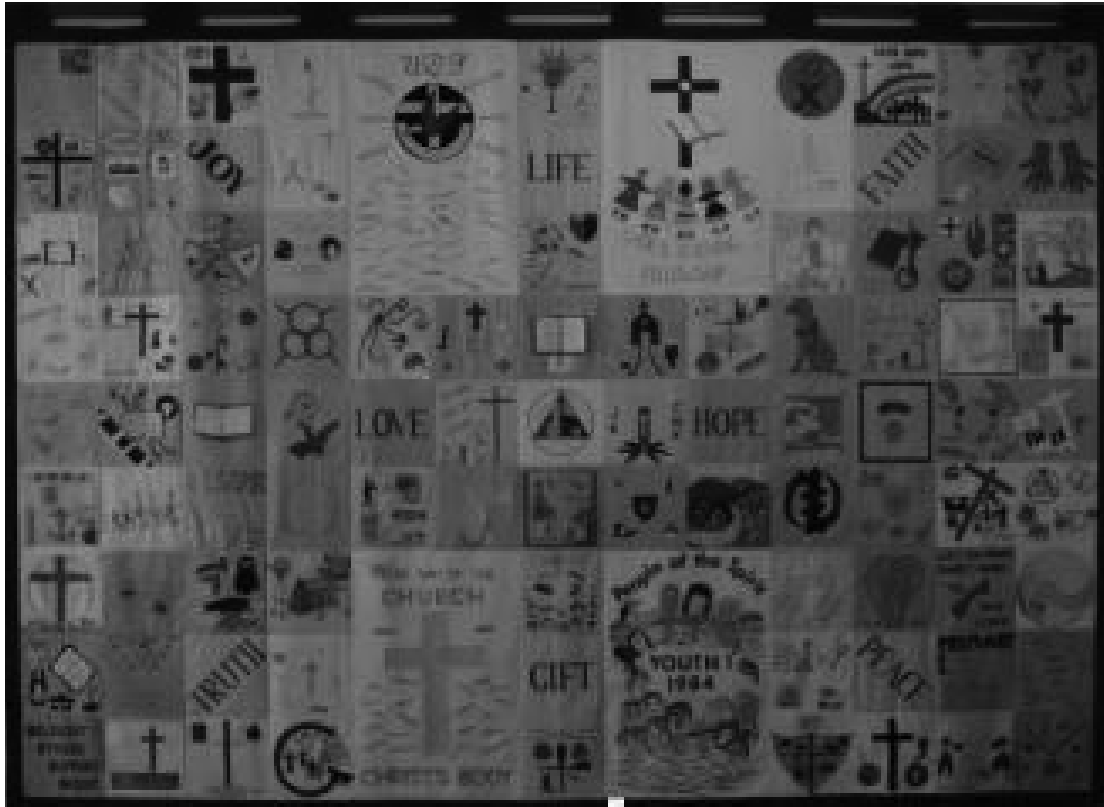
Family Banner

The large family banner on the south wall of the foyer was designed and constructed by Jenny Van Ginkel. Jenny supplied squares to members of the congregation who then depicted their church association and life style on the squares, which were then attached to the

backing sheet. The banner is 3.3 metres wide and just over 2.4 metres high.

A book was compiled showing the makers' names and an explanation of each square. A railing was constructed to protect the banner, which was completed and hung in December 1984.

Steadfast Through Change



Above: The Family Banner in foyer

| | | | | | | | | | | | | |
|----|----|-------|----|------|----|------|----|------|----|-------|----|----|
| 1 | 2 | 3 | 4 | 5 | | 6 | 7 | | 8 | 9 | 10 | 11 |
| 12 | 13 | JOY | 14 | | | LIFE | | | 15 | FAITH | 16 | 17 |
| 18 | 19 | 20 | 21 | | | 22 | | | 23 | 24 | 25 | 26 |
| 27 | 28 | 29 | 30 | 31 | 32 | 33 | 34 | 35 | 36 | 37 | 38 | 39 |
| 40 | 41 | 42 | 43 | LOVE | 44 | 45 | 46 | HOPE | 47 | 48 | 49 | 50 |
| 51 | 52 | 53 | 54 | 55 | 56 | 57 | 58 | 59 | 60 | 61 | 62 | 63 |
| 64 | 65 | 66 | 67 | 68 | | 69 | 70 | | 71 | 72 | 73 | 74 |
| 75 | 76 | TRUTH | 77 | | | GIFT | | | 78 | PEACE | 79 | 80 |
| 81 | 82 | 83 | 84 | | | 85 | | | 86 | 87 | 88 | 89 |

Above: A numbered plan for the patches included in the family banner

Steadfast Through Change

Next to each patch number below is a list of the family members involved in the making of the quilt.

1. **LANG** Cliff, Lyn, Michelle, Jeffrey & Sue
2. **TYLER** Jim & Jean
3. **Junior Youth Group**
4. **GILL** Peter, Carlene, David, Julianne, Andrea & Carolyn
5. **Ladies U.C.F. Afternoon Fellowship**
6. **CHAMPION** Clive, Joyce, Ross, Andrew & Susan
7. **Ladies Evening Fellowship**
8. **PATTERSON** Bob, Barbara, Rob, John, Janet & Kim
9. **GILL** Ian, Jill, Shane, Nerida, Ryan, Fraser & Hayley
10. **THOMPSON** Eric, Glenice, Scott, Lisa & Adam
11. **HUNT** Jack & Olive
12. **VAN GINKEL** Henry, Jenny, Scott & Deborah
13. **Young Adults (S.L.A.G.)**
14. **ANGUS** John, Judy, Michael & Timothy
15. **TINNEY** Eric & Patti
16. **OBORNE** Joyce
17. **GOUDGE** Brian, Joan, Mandy & David
18. **PATCHETT** Noel, Jenny, Jane, Timothy & Andrea
19. **WILLIAMS** Peter & Helen
20. **MEDLYN** Earl, Judy, Janine, Peter & Lindy
21. **ANDERSON** Grace
22. **McMILLAN** Noel, Nola, Peter, Janine & Kim
23. **McGIBBON** Phillip, Erril, Benjamin, Jessica & Anna
24. **ROSS** William, Jessie, Jennifer & William
25. **LYALL** Ian & Joan
26. **WHITING** John, Margaret, Janine & Christopher
27. **HICKS** Frank, Joy, Stephen & Jennifer
28. **GRILLS** John, Valerie, Carolyn, Julie, Richard & Bryan
29. **SELLER** Darcy, Meg, Laurel & Ashley
30. **WURM** Allan & Nancye
31. **SHEPHERD** Keith, Mary & Julie
32. **NICHOLLS** Raymond, Elizabeth, Timothy & Alison
33. **TURRILL** Keith, Dorothy, Jenny, Ian, Robyn & Michelle
34. **SMITH** Don, Jan, Andrew & Kerrina
35. **FINDLAY** John, Carole, Lisa, Anthony & Michelle
36. **DAVID** Dulcie
37. **STONEHOUSE** Brian, Jeanette, Jennifer & Anne
38. **FISHER** Arthur, Margot, Jenny & Catherine
39. **WEAVER** Dougal & Winifred
40. **HARRIS** Warren, Vivienne, Michelle, Catherine & Stewart
41. **ALLEN** Ken, Beth, Paul & Stephen
42. **PAGE** Ian, Leonie, Andrew & Tim
43. **EAGLES** Claude, Glenys, Jacqueline, David & Rohan
44. **THOMAS** Rodger, Julie, Narelle, Ben & Emma
45. **Parish Logo**, designed by Reverend Ann Painter
46. **McAVANEY** Kevin, Joy, Christopher, Nicholas & Katherine
47. **SWAN** Alfred & Helen
48. **PEEL** John & Claire
49. **CRAWFORD** George, Francis & Claire
50. **WILLIAMS** Brian & Jean
51. **ANGUS** Rob, Lorraine, Greg & Michelle
52. **REED** Noel, Sheila, Mark, Ashley & Wesley
53. **WISE** Ron, May, Karenne & David
54. **DAWSON** Leonard, Mary & Ken
55. **GREADY** Vic, Lorraine & Ann
56. **Prayer Chain**, made by Daphne Stewart

Steadfast Through Change

- 57. **PACKETT** Robert, Annette, Russell & Elizabeth
- 58. **MORRISON** Thomas, Catherine, Morag & Anne
- 59. **Barrabool Hills**
- 60. **OWUSU-AKAYAMPONG** Jacob & Phyllis
- 61. **CAMERON** Doug, Joy, Nathan, Alexandra & Adam
- 62. **JACKSON** Doug, Joan, Susan & Craig
- 63. **WHITE** Rod, Jill, Belinda, Douglas & Carolyn
- 64. **GREEN** Doug, Jenny, Kristen, Kathryn & Bronwyn
- 65. **SALVADO** Jack, Ann, John & Neil
- 66. **KING** Max, Marion, Gavin, Narelle & Melita
- 67. **CURRIE** Frank, Jenny, Susan, Fiona, Megan & Rod
- 68. **Youth 11**, Pam Seller (leader)
- 69. **SYDENHAM** Geoffrey, Lorraine, Allison, Richard, Susan & Robyn
- 70. **Youth 1**, 1984
- 71. **WISE**, Ron, May, Karenne & David
- 72. **LEHMANN** Graham, Millie, Jenny (Labrum), Meredith, Naomi, Ruth & John
- 73. **MacROBBIE** Desmond, Joyce, Fiona & Michael
- 74. **REID** Graham, Pamela, Elwyn & Wayne
- 75. **REITER-LYNCH** Frank, Kerrie, (Joe), Aaron & Chantelle
- 76. **Grade 5 & 6**
- 77. **CLARK** Rod, Judy, David, Philip, Stephen & Michelle
- 78. **POOLEY** Ian, Jenny, Angela, Suzanne & Andrew
- 79. **Primary 1**
- 80. **Kindergarten Sunday School**
- 81. **Belmont Stroke Support Group**
- 82. **BALLARD** Rob, Annis, Deborah & Andrew
- 83. **ELLERTON** David, Nerida, Andrew, Derek & Kristan
- 84. **Ceres**

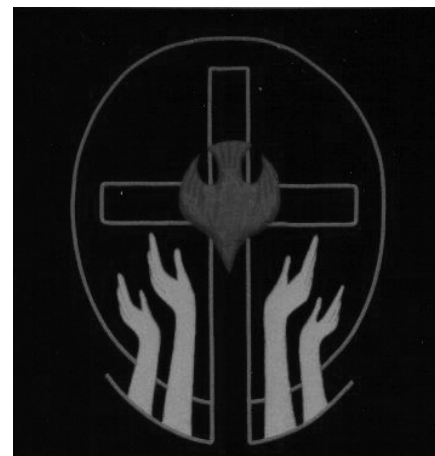
- 85. **TITLER** Roger, Carolyn, Deanna, David & Michelle
- 86. **SELLER** Mark, Pam, Paul & Bradley
- 87. **PULLIN** Bob, Stella, Mark & Christine
- 88. **McKENZIE** Peter, Elizabeth & Tim
- 89. **MURRANT** Edward, Glenda, Susan, James & Leigh

Peace Banners

In 1986, Sunday school children made several banners representing Peace.

Pentecost, Wedding & Baptism Banners

Jenny was later commissioned to make banners for the celebration of Pentecost, weddings and baptisms, and these are a featured background at each celebration.



Above Top: The Pentecost Banner & Above Bottom: The Ascension Banner



Above: Banner used for baptisms



Above: Banner used for weddings

The Passion in Pictures From Pentecost to Christ the King

The following information is contained in a booklet available from the church.



Above: Lorraine Phelan, who supervised the construction as well as working on the banners



Above: Linda Salamy working on a banner



Above: Phil Phelan erecting the Passion in Pictures banners on the Western Wall of the Sanctuary

Steadfast Through Change

In February 2003, the minister, Rev. Dr Marian Zaunbrecher, with the support and encouragement of the Worship Committee at St. Luke's requested the creation of visual aids to worship for the period of approximately six months from Pentecost to Christ the King. A small Planning Group convened by Rev. Wesley Trigg agreed to undertake this project.

Hilary Clarke, artist, was approached for her assistance. She willingly consented to work with the group in sorting out the material and creating visual images that would reflect some of the main ideas behind the relevant lessons.

The following basic components were established. A series of six banners would be required that would represent a pilgrimage or journey through the period. They would vary in shape and size, with a connecting theme through all the banners. The first would be associated with the festival of Pentecost, and the sixth would belong to the festival of Christ the King. One banner would be a reminder of the healing ministry of Jesus, and another would show that Jesus spent much time and energy teaching his people. Where possible the banners would contain an appropriate Australian element. The symbol of hands would be used to remind us that God came to us in the human person of Jesus and that our lives are bound up with other people.

Each of the six, three metre long banners took an average of forty hours to complete, largely the work of Lorraine Phelan. These magnificent banners are a kaleidoscope of color, and each week from June they develop themes of Pentecost, healing, teaching, opposition, joy, sacrifice and mystery. A duplicate of the 'Sacrifice and Mystery' banner was donated to the Birregurra Uniting Church. At a special church service of thanksgiving and dedication at St. Luke's

on 18 November 2005, the following people were presented with certificates of appreciation.

- Hilary Clarke, for designing the banners
- Lorraine Phelan, for her part in the planning group and for constructing the major part of the banners
- Linda & Liam Salamy, for assisting in the construction of the banners
- Dorothy Turrill, for assisting in the construction of the banners
- Judy Boehm, for assisting in the construction of the banners and for membership of the Planning Group
- Geoff Boehm, for providing some digital photographs for the banner booklet
- Phil Phelan, for erecting the banners on the western wall of the Sanctuary in the church.
- Pamela Morgan, for dying silk for the stream in the banners
- Stephen Reynolds, for photographs and preparing the booklet for printing
- Terry Ayrton, Dorothy Ayrton, Jenny Pooley, Glenda Murrant for membership of the planning group
- Wesley Trigg, for convening the planning group.
- Hilary Clarke and Lorraine Phelan were also presented with gifts.

The banners are stored in a specially constructed storage facility, (courtesy of Phil. Phelan), which is situated in the north west corner of the church on the ground floor.

We are indeed fortunate to have these people of vision and ability, using their talents and gifts to enhance worship of God at St. Luke's.

Note: When not on display the small banners are kept in a purpose-made cupboard on the hall stage.

This is the Day & Let Us Rejoice Banners

In 1984, Annette Packet designed two banners that complemented each other, with the above wording. Helen Williams constructed the banners.

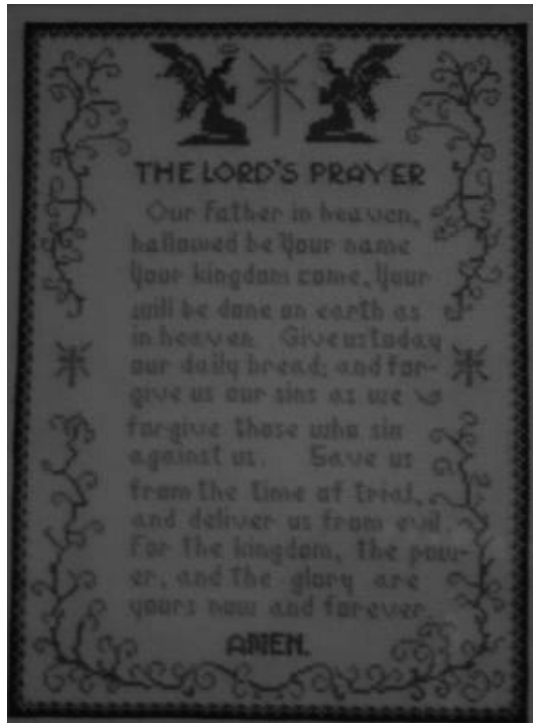
Needlework

Communion Tablecloth

A large hand-painted communion tablecloth depicting the communion elements was also made by Jenny Van Ginkel in 1985, and is used during communion services.

Cross Stitch Lord's Prayer

Jean Williams presented the church with a framed cross-stitch wording of the Lord's Prayer in 1999. This hangs under the cross on the south wall of the church.



Above: The cross-stitch Lord's Prayer presented by Jean Williams

Uniting Church Logo

In 1985 Stan Harding made and donated to the church a round rug wool circle of the Uniting Church logo. The logo hangs on the north wall of the church.



Above: The rug wool logo presented by Stan Harding.

Photography

Framed Photo of Chapel

In December 2005 Wynsome Penn presented the congregation with a framed photograph of the Chapel taken sometime before the tornado in 1926. The photo is on the wall in the foyer next to a painting of the church by artist David Williams.



Above: The photo donated by Wynsome Penn. Note: A close version of this view can be seen in section two.

Woodwork

Large Timber Cross

The Barrabool Hills congregation made a gift of the large timber cross which was installed in the centre of the west wall during construction of the worship centre in 1983.

Bible Stand & Columns

Clive Champion presented the church with a turned and stained timber bible stand, which sits on the former Highton Presbyterian Church communion table in the foyer. Clive also made six one metre high columns for roping off areas when necessary.



Above: The turned & stained bible stand made by Clive Champion on the former Highton Presbyterian Communion table.

Small Wooden Cross

Les Oliver provided a small wooden cross for the table in the prayer corner of the church.

Chapter 33

TRIBUTES

Acknowledgement of the Original Owners of the Land

On 27 September 1998, the congregation of St. Luke's held a ceremony to mark the unveiling of a plaque mounted on a rock placed in the south garden on the Barrabool Road frontage of the church.

The Rev. Alan Hardie and Mrs L Lane, archaeologist, who had provided the historical information about the Wataurung Tribe, which inhabited this place for many generations before European settlement, conducted the ceremony.



Above: Mrs L Lane, archeologist and the Rev. Alan Hardie at the unveiling of the plaque recognizing the original owners of the church land.



Above: Photo of the rock and plaque.

The wording on the plaque reads as follows

THE PEOPLE OF ST. LUKE'S
ACKNOWLEDGE THAT
THE WUDTAURUNG CLAN OF
THE WATUARUNG TRIBE
INHABITED THIS PLACE FOR
MANY GENERATIONS BEFORE
EUROPEAN SETTLEMENT

Tributes

Ian Allan

Throughout the history of any organization, certain names appear frequently. One such name is that of Ian Allan. When Ian and his parents Bill and Nellie Allan first attended services at the Highton Methodist Church in 1949 there were less than 30 members on the roll. Ian has given much of his time and talents to the church over the past 50 plus years. His warm Christian influence has been a contributing factor to his role as Sunday school teacher, superintendent of the Sunday school, and Youth Club leader. His practical abilities have been invaluable to many church committees such as the Methodist Leaders' Meetings, the Methodist Men's Society, St. Luke's Outreach Committee, the Refugee Resettlement Committee, and Student Youth Housing.

Right: Mr. Ian Allan

Ian was a St. Luke's Elder for eight years, and continues to participate in Pastoral Care. He was a member of the Parish Council,



and has been a member of the Property/Finance Committee, now the Resources Ministry Team, for over 40 years.

Ian has been a member of the committee and president of St. Luke's Preschool Committee for many years. His background knowledge and practical work for the Preschool has made it a pleasant and safe environment for generations of children. Among Ian's many virtues are his constancy and reliability. If he says he will do a task or be somewhere at an appointed time, assuredly he will be there. We give thanks to God for men like Ian Allan.

Clive Champion

The following is a Minute of Appreciation affirmed by the Church Council on June 20, 2006.

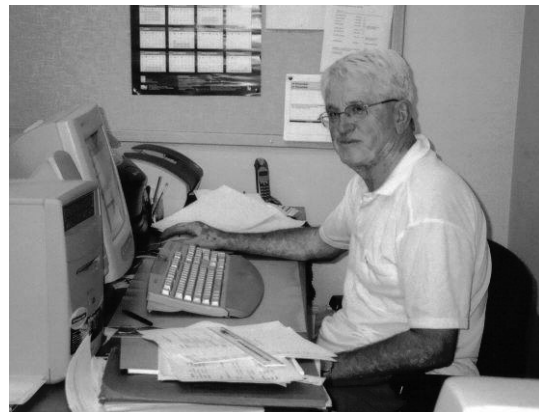
"St. Luke's Church Council acknowledges with appreciation, the service of Clive Champion as Elder, Pastoral Visitor and Councillor over thirty years. Clive was one of the forty-three elders commissioned to form the first St. Luke's Elders' Council in 1977 when the Uniting Church came into being. Prior to that he had been an elder in the Methodist-Presbyterian Co-operating Parish. As well as being an Elder, he was a member of the Parish Council and St. Luke's Council after parishes ceased to exist as a council structure. When elders were replaced by 'Leaders', Clive continued as one of the sixteen St. Luke's Leaders until his recent resignation. We do not overlook the strong support of his wife Joyce, both being active links in St. Luke's Prayer Chain, Bible Study weekly meetings at their home for many years, and pastoral visitation.

The Council wishes them God's blessings as they move into retirement village life."

Des & Dorothy Bath

Des and his wife Dorothy have been faithful members of St. Luke's since 1960, and are a great source of knowledge about the church - both past and present. Des was the congregational and Parish treasurer and also secretary of the Parish Council for many years. He looked after the church rolls and was a member of the Property-Finance Committee.

His current title is Church Office Manager, and he is responsible for arranging rosters, producing the weekly notice sheets and the power point presentation for the services. He also assists with the production of the "Link" magazine as a member of the Communication Ministry Team.



Above: Des Bath in the church office.



Above: One of the many beautiful flower arrangements provided by Dorothy Bath.

Dorothy uses her talent of floral art in the church, and it is always evident when she has arranged the flowers in the sanctuary - particularly on special celebration days in the church calendar. Dorothy also encourages other ladies in the congregation to join the flower-arranging roster.

It is committed members of the church like Des and Dorothy Bath that provide stability, experience, fellowship and service, while at the same time, giving invaluable assistance to our ministers.

Norman & Vera McDonald

The contribution and generosity of Norman and Vera McDonald has been mentioned elsewhere, and St. Luke's was fortunate to have such devoted servants. The following tributes tell of their community and church involvement and this article was printed in the *Belmont News* on 22 February 1966.

"Tribute to Norman McDonald

Mr McDonald, a resident of South Valley Road Highton died yesterday after a short illness. He was 64. He leaves his wife Mrs Vera McDonald. More than 500 people attended the funeral at the Highton Methodist Church. In tribute to his 20 years as captain of the Highton Fire Brigade, Mr McDonald was accorded a full fireman's funeral, an honour usually reserved for members of urban brigades. The church was packed and the former minister Rev. S Box returned from Sale to officiate at the service together with the present minister, Rev. David Pentecost. Mr McDonald gave a lifetime of service to the Highton District. There was hardly an organisation with which he was not connected. He was a past president and life member of the Highton Progress Association, a foundation member and treasurer of the Highton Red Cross, and he was

closely associated with the Highton Preschool Centre. He was active in almost every organisation of the Highton Methodist Church. He and his wife were responsible for the construction of the church fellowship room. In his younger days Mr McDonald was a keen cricketer."



Above: Mr Norm McDonald

The following excerpt appeared in the October 1985 *Parish News*.

"Vera McDonald

Vera was born on 2 October 1897 - died 31 July 1985. Vera's parents were Harriet and John Harrison of "Ferndale", a property on Mt. Pleasant Road, Highton. Vera became an active member of the Highton Methodist Church. She was a Sunday School teacher and inspired all who were fortunate to be her pupils. In 1939 Vera married Norman McDonald and she came to live in a new home in South Valley Road. She was an active member of the Methodist Christian Endeavour Society; Highton Ladies' Guild, Red Cross; Ministering Children's League; Country Women's Association; CWA

Highton Choir; Geelong Agricultural Society Ladies Committee; Women's Christian Temperance Union; Senior Citizens Welfare Association; Order of Sons of Temperance. Vera's funeral service was conducted by Rev. Bob Patterson with the eulogy and proclamation given by a former minister of the church, Rev. Steve Box."



Above: Mrs Vera McDonald

Wes & Joan Marshman

Wes & Joan came to Highton as newly weds in 1954 and soon became active members of the Highton Methodist Church.

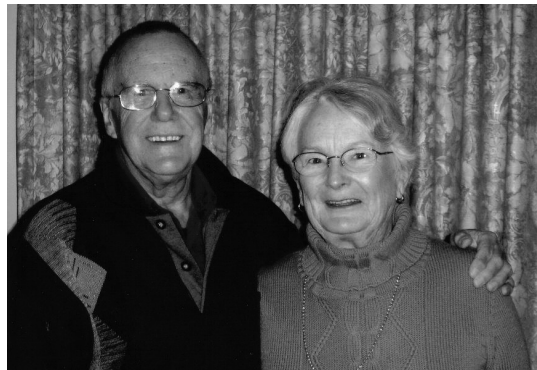
Wes taught in the Sunday school then became superintendent and Youth Club leader. He was a member and secretary of the Church Trust and later a member of the Property Board.

Wes and Joan were both elders, and Wes was convenor of the Worship Committee and a lay preacher. They both enjoyed playing badminton with the church teams in the hall.

Wes was previously one of the church organists, and his love of music is still expressed as a member of the choir. Currently he and Joan also enjoy singing with the Praise and Worship group.

Joan was a member of the Ladies' Evening Fellowship and the Evening Craft Group, and a formation member of the South Barwon Uniting Mission Group.

Wes and Joan are examples of Jesus's teaching of lay ministry and love. An additional expression of their Christian ministry and service is their involvement in the organization of the midweek service for older members of the congregation.



Above: Wes & Joan Marshman

Ivan & Lila Stanway

Ivan and Lila are devoted and constant members of St. Luke's.

Ivan has contributed his administrative skills to the smooth running of St. Luke's as an executive member of the Property-Finance Committee, later renamed the Resource Ministry team, and as a member of the Church Council.

Ivan has always participated in working bees and he is one of the operators of the sound system during services. He has also acted as an auditor for various church groups. We thank you and salute you Ivan.

Steadfast Through Change

Lila Stanway has been an inspiration to everyone at St. Luke's. Despite health problems, Lila has been a constant member at UCAF meetings and was the treasurer for fifteen years. Lila accompanies Ivan to every service and fund raising effort at St. Luke's, and we are thankful for inspirational people like Lila.



Above L-R: Keith Ash, Lila & Ivan Stanway

Alf Swan

Alf Swan has been a faithful, respected and caring member of St. Luke's since 1974.

As recorded, he was an Elder for 26 years and is a continuing member of the Pastoral Care Ministry. He was Chairman of the Council of Elders for 5 years, Chairman of the Congregational Meetings for 10 years, and Chairman of Parish Council for a lengthy period.

Apart from those leadership tasks, performed with Christian integrity, tolerance and good humour, Alf's love of music is demonstrated regularly as either a member of the choir, or playing the organ or piano for services. He has also been Choir Master at St. Luke's and enjoys singing with the International Harvester Choir.

He has always been prepared to play a leading and guiding role in organizations

such as the Glastonbury Child and Family Services Board, and was Chairman of the Board of Uniting Care Concern for 9 years. Alf and his wife Helen have for some years organized an annual Christmas collection and distribution of gifts and toys to underprivileged Geelong children.

Since 2001, Alf has been coordinator of the Concern Opportunity Shop in Highton. The shop called 'First Options' raises many thousands of dollars a year for welfare through Concern.

The list goes on and Alf and Helen are always busy, working without acclaim, providing hospitality and friendship and setting an example of Christian love.



Above: Alf & Helen Swan.

Eric & Patti Tinney

Eric was a visionary. Impatient to see his visions realised. Always motivated by his stated belief in "an uncontrollable response to the Spirit of God. It is God active in our lives, prodding, leading, challenging, encouraging. It is the Holy Spirit working on and in our lives, holding dialogue with us, helping us see

what needs to be addressed, what hurts, and what awaits healing.” Eric was also capable of enthusing others to help turn the visions into realities. This is evident in the programs listed below which Eric either instigated or participated in.

The following is an outline of some of the programs that Eric worked on in conjunction with St. Luke’s Outreach Committee.

The Kardinia Children’s Home in Belmont where Patti Tinney recalls “Australian flavoured dinners with Vince Ross and Eric playing and singing early Australian folk songs”. Vince Ross and his wife Enid were Cottage Parents at Kardinia for four years.

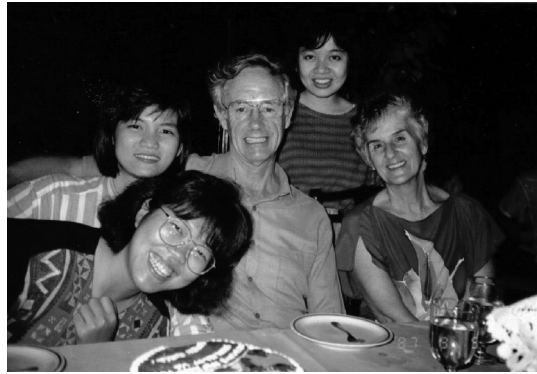
The Resource Office for the Unemployed and an Ironing Service as well as Barwon Prison Visitation and Mall Outreach.

The Committee for the Settlement of Asian Refugees. Eric’s leadership and long-term commitment to this “all consuming mission” is described more fully in the chapter on Outreach.

A Vegetable Garden at Lara. In 1982, Eric Tinney had a vision to help his refugee friends grow vegetables on a large scale at Lara. The idea was to create employment, experience and dignity for the refugees. This was a short-term venture, as some of the men found work at the Ford Motor Company.

Eric and Patti were also active members of Gideons International for many years. Patti carries on this valuable work.

Teaching in Thailand. In 1984, Eric and Patti Tinney flew to Thailand “for a new experience as aliens in a different culture”. Eric’s contract was to teach dental students and to assist with the maxilla-facial surgery in the medical hospital for two years.

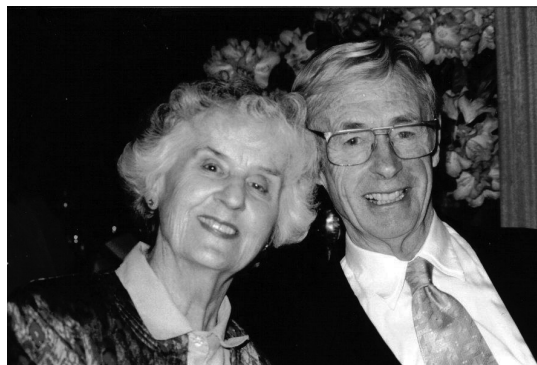


Above: Eric’s dental students at Prince of Sangklah University at Hatyai, Thailand 1987

Eric’s greatest supporter was his wife Patti, a loving steadfast Christian lady. She was the most popular ‘farung’ (foreigner) on campus, especially for her English classes. In an article written by Eric during their Thailand experience, he wrote, “Patti is a ‘natural’”. She goes straight in, casually starts talking ‘garden’ to peasants and professors alike, at the same time, shoving bits of stick into the warm, gravelly soil. She then spends the months ahead introducing all and sundry to her partner in the flower business - God”.

The fourteen farewell dinner parties hosted by Thai colleagues, students and neighbours, affirmed the success of this venture.

Vale: Eric Tinney went to meet his God in November 2002.



Above: Eric & Patti Tinney

Chapter 34

CHURCH STATISTICS

Highton Methodist Church

| | 1953 | 1956 | 1960 | 1961 | 1964 | 1965 | 1966 | 1968 | 1971 |
|------------------------|------|------|------|------|------|------|------|------|------|
| Confirmed Members | 33 | 45 | 65 | 80 | 134 | 175 | 206 | 235 | 244 |
| Members in Association | | | | | | | | 3 | 3 |
| Under Nurture (SS) | 23 | 21 | 58 | 76 | 140 | 120 | 180 | 259 | 272 |

Highton Methodist-Presbyterian Cooperating Parish

| | 1972 | 1973 | 1974 | 1975 | 1976 |
|------------------------------|------|------|------|------|------|
| Confirmed Membersm Methodist | 271 | 288 | 294 | 305 | 307 |
| Members in Association | 3 | 3 | 3 | 2 | 5 |
| Under Nurture (SS) | 283 | 363 | 369 | 389 | 377 |

Highton Presbyterian Church

| | 1968 | 1970 | 1971 | 1972 | 1973 | 1974 | 1975 | 1976 |
|---------------|------|------|------|------|------|------|------|------|
| Membership | 310 | 304 | 325 | 376 | 391 | 351 | 354 | 356 |
| Sunday School | | | | | 202 | 237 | 184 | 196 |

Highton Barrabool Hills Parish

| | 1977 | 1978 | 1980 | 1983 | 1985 | 1987 | 1988 | 1990 |
|------------------------|------|------|------|------|------|------|------|------|
| Confirmed Members | 750 | 727 | 656 | 519 | 559 | 505 | 549 | 533 |
| Members in Association | 5 | 5 | 3 | 3 | 2 | 2 | 2 | |
| Under Nurture (SS) | 320 | 310 | 300 | 160 | 85 | 70 | 69 | 54 |

| | 1993 | 1994 | 1995 | 1996 | 1997 | 1998 | 1999 |
|------------------------|------|------|------|------|------|------|------|
| Confirmed Members | 470 | 453 | 446 | 415 | 351 | 335 | 340 |
| Members in Association | 3 | 3 | 3 | 3 | 5 | 5 | 7 |
| Under Nurture (SS) | 32 | 23 | 20 | | 6 | | |
| Sunday Club | | | | | | | 10 |
| Number of Families | | | | | 250 | 235 | 240 |

St. Luke's Highton

| | 2000 | 2001 | 2002 | 2003 | 2004 | 2005 | 2006 |
|---|------|------|------|------|------|------|------|
| Confirmed Members | 331 | 345 | 339 | 286 | 280 | 232 | 224 |
| Members in Association | 8 | 8 | 9 | 7 | 6 | 8 | 8 |
| Children & Youth Ministry, Including Countdown | 100 | 120 | 124 | 133 | 93 | 70 | 66 |
| Number of Families | 240 | 250 | 287 | 273 | 245 | 242 | 209 |
| Average at Worship | 174 | 193 | 185 | 157 | 120 | 122 | 122 |
| Average at Monthly Mid-Week Worship | 55 | 59 | 58 | 53 | 52 | 37 | 39 |

Rites of Church

| | 1992 | 1993 | 1994 | 1995 | 1996 | 1997 | 1998 | 1999 |
|---------------|------|------|------|------|------|------|------|------|
| Baptisms | 10 | 8 | 13 | 10 | 10 | 8 | 5 | 6 |
| Marriages | 10 | 8 | 6 | 8 | 5 | 3 | | 0 |
| Funerals | 9 | 17 | 16 | 9 | 15 | 14 | 8 | 11 |
| Confirmations | 4 | 1 | 1 | 0 | 0 | 1 | | 2 |

| | 2000 | 2001 | 2002 | 2003 | 2004 | 2005 | 2006 |
|---------------|------|------|------|------|------|------|------|
| Baptisms | 5 | 6 | 5 | 5 | 4 | 6 | 5 |
| Marriages | | | 1 | 0 | 0 | 0 | 0 |
| Funerals | 10 | 8 | 8 | 6 | 8 | 11 | 8 |
| Confirmations | | | 1 | 0 | 1 | 0 | 1 |

Note: During the 1970s a large number of adherents attended services with their children.

Sources: Minute Books, Attendance Books, Parish Profiles, Annual Reports and the Uniting Church Archive Centre. Figures may vary depending on the time of year and the organisation reporting, e.g., figures in a Parish profile may differ from a minute book of the same period. Statistics were also supplied by Joan Jackson, Pastoral Care Convenor and Pam Seller, Mid-Week Service Organiser.

Chapter 35

CHRONOLOGICAL LIST OF EVENTS

This list is made up of items of interest to members of the church and to the general reader. It details events that affected both church members and the local community, and reflects social mores of the period. It commences in 1972 when the Highton Methodist/Presbyterian Co-operating Parish was formed.

- 1972 Sister Mary Agatha from the nearby St. Catherine's Catholic Children's Home spoke at the two morning services at the Highton Methodist/Presbyterian Co-operating Parish church in Roslyn Road. As a result members of the congregation provided transport for children from the Home to attend health related appointments and to school and Sunday School.
- 1973 The Highton Parish Cricket Club was formed.
- 1974 A Neighbourhood Care group was formed. Church volunteers door-knocked in Highton for the Freedom from Hunger Campaign. Church members maintained contact with the Ball, Edwards, Odd and Reed families who were working in the mission fields.
- 1975 Fifty teachers were teaching 389 children in the Sunday school, held on the Roslyn and Barrabool Road sites. A church service was held for the 1st Highton Cub group and their visitors from Simpson. A special service was held for St. Luke's Day, and the annual Autumn Fair was an enjoyable day.
- 1977 Tragic bush fires were reported in the western district. Church members responded to the appeal for aid, and a work party travelled to the Derrinallum area to assist with restoration. Donations were made to the Beeac/Cressy areas. Arrangements were made to celebrate the launch of the Uniting Church on Sunday, June 26.
- 1978 The Barrabool Hills congregations were worshipping together and building stronger ties.
- 1979 Concern was expressed over the youth unemployment problem in Victoria.

- The church supported projects such as the Kardinia Homes development and the Refugee Resettlement scheme.
- 1980 Consolidation of all church activities took place on the Barrabool Road site. Approval was given for the preparation of a church history.
- 1981 Increase in church youth activities with three youth groups formed. They raised \$500 for the Refugee Resettlement project.
- 1982 The Roslyn Road church property, less the manse, was sold to the City of South Barwon for community use. Anniversary services at Ceres (127 years) and Barrabool (123 years) were well supported. Prayers were offered for our friends and neighbours in the Barrabool hills suffering from a record drought. Planning for the new worship centre at Barrabool Road reached an advanced stage.
- 1983 Following the disastrous fires in February, members of the Parish readily offered assistance, particularly in the Deans Marsh, Anglesea and Aireys Inlet areas. The new Barrabool Road worship centre was opened on August 7. It was reported that the fourteenth family sponsored by the Refugee Resettlement Committee was about to arrive in Geelong.
- 1984 Additional staff employed to assist with administration and pastoral care.
- 1985 A parish review was undertaken by the Barwon Presbytery and the review team reported that the life of the parish was "vibrant, growing, warm and full of hope." The wider church examined three matters of church and social importance: In-vitro fertilization; Homosexuality and the Church; Pornography, and associated matters.
- 1986 St. Luke's participated in programs in support of the International Year of Peace.
- 1987 A Christian Singles Group was formed at St. Luke's.
- 1988 A paper on the question of bishops in the Uniting Church was tabled and no action taken. Evangelist and author Dr Leighton Ford led a successful Geelong inter-church celebration as part of Australia's bi-centenary celebrations.
- 1990 A Synod special task force Report on Homeless Youth and Children was received. Members of St. Luke's joined

Steadfast Through Change

| | | | |
|------|---|------|--|
| | the caravan outreach program in the Geelong City mall. It was reported that a 'Network of Care' within the Presbytery was established to assist people suffering from the collapse of the Pyramid Building Society. | | Belmont, Highton, Moriac and the Hills congregations. Also in 1999, St. Luke's complied with Synod's decree that parish councils be replaced by individual church councils thereby severing ties with the Hills Congregation. |
| 1991 | The question of copyright for music was dealt with. Synod requested that smoking be prohibited on all church property. | 2000 | Count Down to Christmas was developed as a program for school children and has been run each year at St. Luke's for several weeks prior to Christmas. An Opportunity Shop was opened in Highton, staffed by many volunteers from St. Luke's. The profits go to the work of Concern, a Uniting Church welfare organisation. |
| 1992 | One of the Parish ministers allocated one day a week as Chaplain at Deakin University until 1995. Roslyn Road manse renovated and enlarged. The congregation adopted a mission statement and goals. Three hundred tea towels were printed as a fund raiser. Images of the three churches in the Parish were printed on the tea towels and they were used frequently as gifts for people leaving the church. The Parish Council explored means of dealing with the short-fall in income. | 2002 | St. Luke's supported many appeals and projects, including the Share Appeal, the Lenten Appeal, the Christmas Bowl and other mission projects. |
| 1993 | Considerable storm damage to the Highton church and both manses was reported and repaired. | 2003 | The 150th anniversary of the church was held, with the congregation and guests enjoying a great day. St. Luke's adopted the 'Purpose Driven Church' journey. |
| 1994 | Drought conditions were experienced by our Hills neighbours. Electricity lines were placed underground in the Ceres township, and the Barrabool Sunday School was painted. Members of the Bible Study Fellowship started using the St. Luke's complex for their regular bible study and meetings. | 2005 | The Bairo Pite Medical Clinic in East Timor was supported by fund raising events organised by the Belmont-Highton Social Issues Group. Young Australian of the Year, Huw Evans, was the guest at St. Luke's for a special service. A Sudanese family was accommodated in one of the church manses. Continued support is provided for this family as well as for other members of the Sudanese community, including a regular sewing group in the Chapel. |
| 1995 | The Parish Council was restructured to include the minister, ministers in association, congregational representatives, elders and lay preachers. | 2006 | St. Luke's was instrumental in appointing a new chaplain at Deakin University for 2007. |
| 1996 | The month of May saw the death of three of the Parish's well known and loved men - Allan Wurm, Max Anderson and Doug Cameron. The church supported the social outcry over the employment of under paid home-based workers in the clothing industry. | | St. Luke's Sunday school 150th anniversary was celebrated in October. Prolonged drought conditions affected the State - severe water restrictions enforced. Church members and the community enjoyed a successful St. Luke's Carnival/Expo. |
| 1997 | The Interim Report on Sexuality was the subject of meetings and prayers. Discussions and meetings were held in connection with the formation of the Highton-Barrabool Hills Joint Council. | | A St. Luke's 'Wheels' program commenced, where church volunteers made themselves available to drive elderly people to and from appointments or home from shopping. |
| 1998 | An Interim minister was appointed in March, also a consultant minister, to assist the parish's future deliberations. | 2007 | Church Council agreed to establish a loan fund to provide small interest free loans to refugees who had obtained visas to migrate to Australia, but who |
| 1999 | The South Barwon Uniting Mission Group was formed, comprising | | |

Steadfast Through Change

2007 did not have the financial resources to purchase air fares.

Regular meetings of the Highton unit of the Red Cross, and the local Cottage by the Sea committee were held in the Fellowship Room.

The St. Luke's Book Club met and a series of men's cookery classes was commenced.

The UCAF announced that \$1,200 had been raised and distributed in 2006.

The Micah Challenge program was launched to 'make poverty history'.

There was an increased demand for 'Wheels' drivers on weekdays and Sundays.

Photos of the congregation were taken for inclusion in the history book.

The Lane Memorial hall was repainted.

The ladies of the church community knitted items for new born African babies.

The film 'An Inconvenient Truth' showing evidence of global warming was shown at St. Luke's.

House Church celebrated its tenth birthday.

The 30th Anniversary of the Uniting Church in Australia was celebrated.

Average weekly church attendance in June was 146, including a midweek service.

The Social Issues Group supported Medecines Sans Frontieres HIV program and the World Vision 40 Hour Famine fund raiser.

A winter season choir formed by Robyn Hodge held a concert in August.

A Cake & Craft Stall was held in Highton to raise funds towards the cost of printing the church history book.

Xanana Gusmau film 'A Hero's Journey' was shown at St. Luke's, and the Christian Blind Mission International held an afternoon to support a worker in Tanzania.

A successful Art Exhibition 'Journeys of Hope' took place in August.

Goal six of the Micah Challenge – Combating HIV/AIDS and Malaria was met.

Australian cooking classes for Sudanese women were commenced in the church kitchen.

Tim Costello, Chief Executive of World Vision spoke at St. Luke's on Climate Change. His topic was, "Why the poor will reap what we sow."

The annual Carnival/Expo was held in November realized over \$9,000.

The Church Council forwarded \$2,600 to the Hotham Mission Asylum Seeker Project in Melbourne.

Church and local knitters have produced 346 small jumpers, 158 beanie hats 37 toys, 18 pairs of booties for vulnerable children in Africa and other needy countries.

The UCAF packed and sent 27 back packs for children of the Pacific Islands. The Micah Challenge Team raised \$1,850 at an Upside Down Luncheon at St. Luke's for Concern and Pex funds.

Advent and Christmas celebrations held by House Church, Midweek Service and Jesus' Birthday Party were very successful. The Christmas and Advent banners set the scene in the church.